

Union University

Student Housing Phase III

55 BILDG. 2

CONSTRUCTION PHASED BY BUILDING:
ORDER OF PHASES:
BUILDING 1
BUILDING 3
BUILDING 2

47 BILDG. 3

47 BILDG. 1

City Lumber

Company Inc.

P. O. Box 1983
Jackson, Tennessee 38302
Phone (731) 427-9631
Fax (731) 424-5707
Email: wmtaylor@amsllc-tn.com

City Lumber
Company, Inc.

P. O. Box 1983
Jackson, Tennessee 38302
Phone (731) 427-9631
Fax (731) 424-5707
Email: wmtaylor@amsllc-tn.com

Union University
Student Housing Phase III

ORIGINAL ISSUE:

4-13-10

FIRST REVISION:

4-21-10

SECOND REVISION:

5-14-10

THIRD REVISION:

ARCHITECT:

AMS JOB #:

QUICK DRAW:

0043

DRAWN BY:

BAI

COVER

DRAWING INDEX:

#:	ROOM:	DESCRIPTION:	SHEET:	
1	(35)	KITCHENS	BASE & WALL CABINETS, COUNTER	01
2	(3)	ADA KITCHENS	BASE & WALL CABINETS, COUNTER	02
3	(35)	VANITIES - FINISHED RIGHT	VANITY BASE WITH COUNTER	03
4	(35)	VANITIES - FINISHED LEFT	VANITY BASE WITH COUNTER	03
5	(35)	VANITIES - WALL TO WALL	VANITY BASE WITH COUNTER	04
6	(1)	ADA VANITIES	VANITY COUNTER WITH ACCESS PANEL	04
7	(73)	BEDROOMS - FINISHED RIGHT	WARDROBES	05
8	(76)	BEDROOMS - FINISHED LEFT	WARDROBES	05
9	(3)	HANDICAP RESTROOM	LINEN CABINET	06
10	(54)	RESTROOMS	FIXED SHELVING - LINEN	06
11				
12				
13				
14				
15				
16				
17				
18				
19				
20				
21				
22				
23				
24				
25				

SECTIONS & DETAILS:

D1 - D2

FINISH SELECTIONS:

PLASTIC LAMINATE: Wilsonart: Standard, non-premium		PLEASE CONFIRM LAMINATE LOCATIONS
PL-1	Wilsonart: #4551-01 Blackstar Granite - Counter Tops	

NOTE: These submittal drawings indicate materials and finishes in accordance with our most recent quote and our interpretation of the plans and specifications. Please thoroughly review and mark any necessary corrections. Project materials and finishes will be per shop drawings, unless noted otherwise.

PROJECT SPECIFICATION:

WOOD CABINETS:

MasterBrand: Contractor's Choice
Hammond: Oak / Wheat finish

Typical Base Cabinet Construction:
four furniture board corner braces
3/8" furniture board back panel
3/4" x 1 1/2" solid wood face frame (3" center stiles)
1/2" half-depth furniture board shelf
3/8" furniture board bottom panel
3/8" furniture board sides with matching laminate
3/8" x 4" furniture board recessed toekick
standard cabinet interior natural maple laminate

Typical Wall Cabinet Construction:
1/2" furniture board top panel
3/8" furniture board side panels with matching laminate
1/2" furniture board adjustable shelves
3/4" x 1 1/2" solid wood face frame
3/8" furniture board back panel
1/2" furniture board bottom panel
standard cabinet interior natural maple laminate

Typical Drawer Box Construction:
Self-closing epoxy coated, 100#
1/2" furniture board sides & back to match
aristex interior laminate
Adjustable side mount double rail drawer guides
Double rollers for smoother action
3/8" furniture board drawer bottom with aristex laminate
20" deep drawer box with stapled butt joint construction
Drawer bottom stapled into sides, front & back
Rail captured two sides to prevent excess play
Built-in drawer stop

COUNTER TOPS:

Horizontal grade high pressure plastic laminate on 3/4" plywood substrate with rolled front edges

These drawings indicate the products to be custom manufactured and adjacent work that may affect fabrication and installation. Refer to our most recent quote for the exact items to be supplied. Fabrication begins after these drawings are approved and returned. Architectural Millwork Solutions, Inc. will field measure between-wall dimensions and jobsite conditions prior to fabrication. To avoid delays and misinterpretations, review and return in a timely manner. Should these drawings be revised, Architectural Millwork Solutions reserves the right to amend price and/or production schedules.

WARRANTIES: Void if environment (humidity) does not meet (AWI) climatic specifications or damage by others.

P. O. Box 1983
Jackson, Tennessee 38302
Phone (731) 427-9631
Fax (731) 424-5707
Email: wmtaylor@amsilc-tn.com

City Lumber

Company, Inc.

Union University

Student Housing Phase III

ORIGINAL ISSUE:
4-13-10

FIRST REVISION:
4-21-10

SECOND REVISION:
5-14-10

THIRD REVISION:

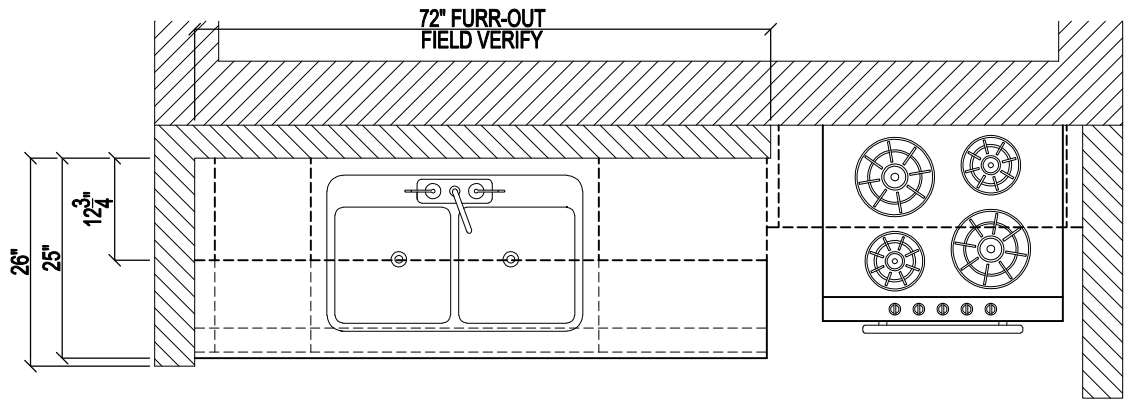
ARCHITECT:

AMS JOB #:

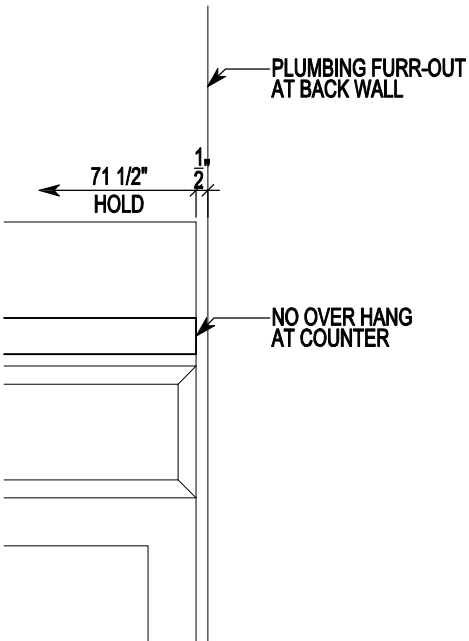
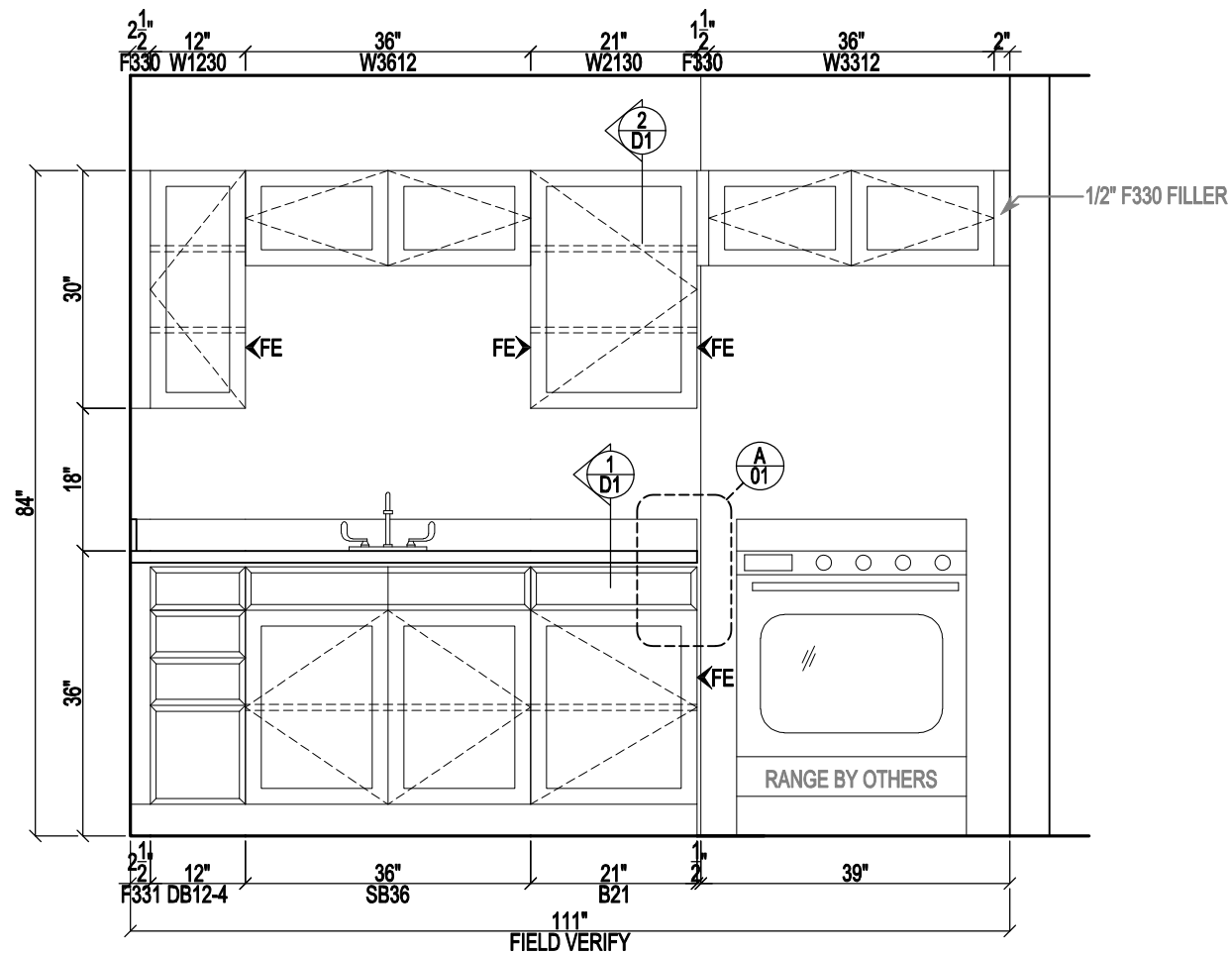
QUICK DRAW:
0043

DRAWN BY:
BAI

INDEX



ROOM SCHEDULE: KITCHENS			
	QTY:	BUILDING:	
1	6	55 FIRST FLOOR	
2	7	55 SECOND FLOOR	
3	6	47 FIRST FLOOR "A"	
4	6	47 SECOND FLOOR "A"	
5	6	47 FIRST FLOOR "B"	
6	6	47 SECOND FLOOR "B"	
(37)		TOTAL QUANTITY	



1	KITCHEN		-
1/2" = 12"	COUNTER / SPLASH:	PLASTIC LAMINATE	
PLAN:	-	CABINET EXTERIORS:	HAMMOND OAK / WHEAT
ELEV:	-		
SECT:	-		

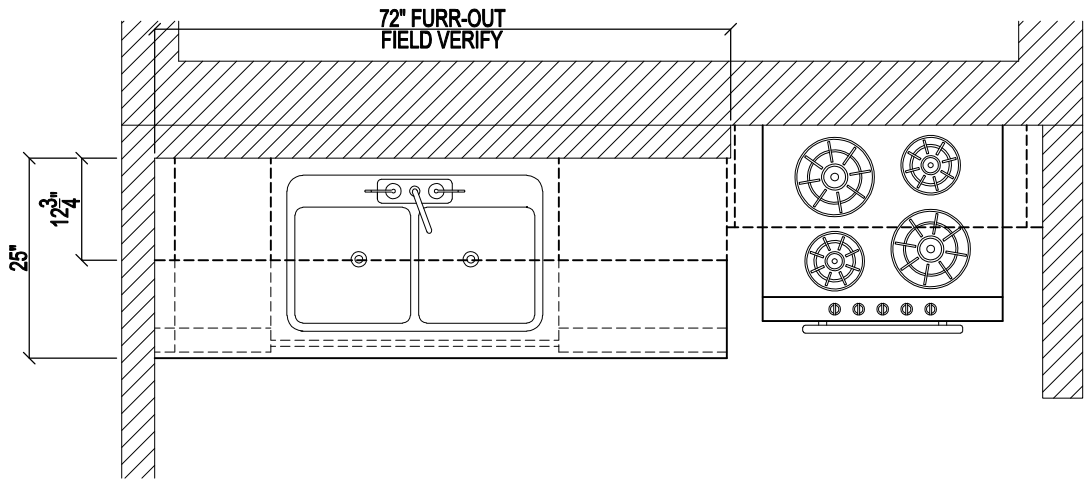
A	FINISHED END DETAIL		-
1/2" = 12"	COUNTER / SPLASH:	PLASTIC LAMINATE	
PLAN:	-	CABINET EXTERIORS:	HAMMOND OAK / WHEAT
ELEV:	-		
SECT:	-		

P. O. Box 1983
Jackson, Tennessee 38302
Phone (731) 427-9631
Fax (731) 424-5707
Email: wmtaylor@amsllc-tn.com

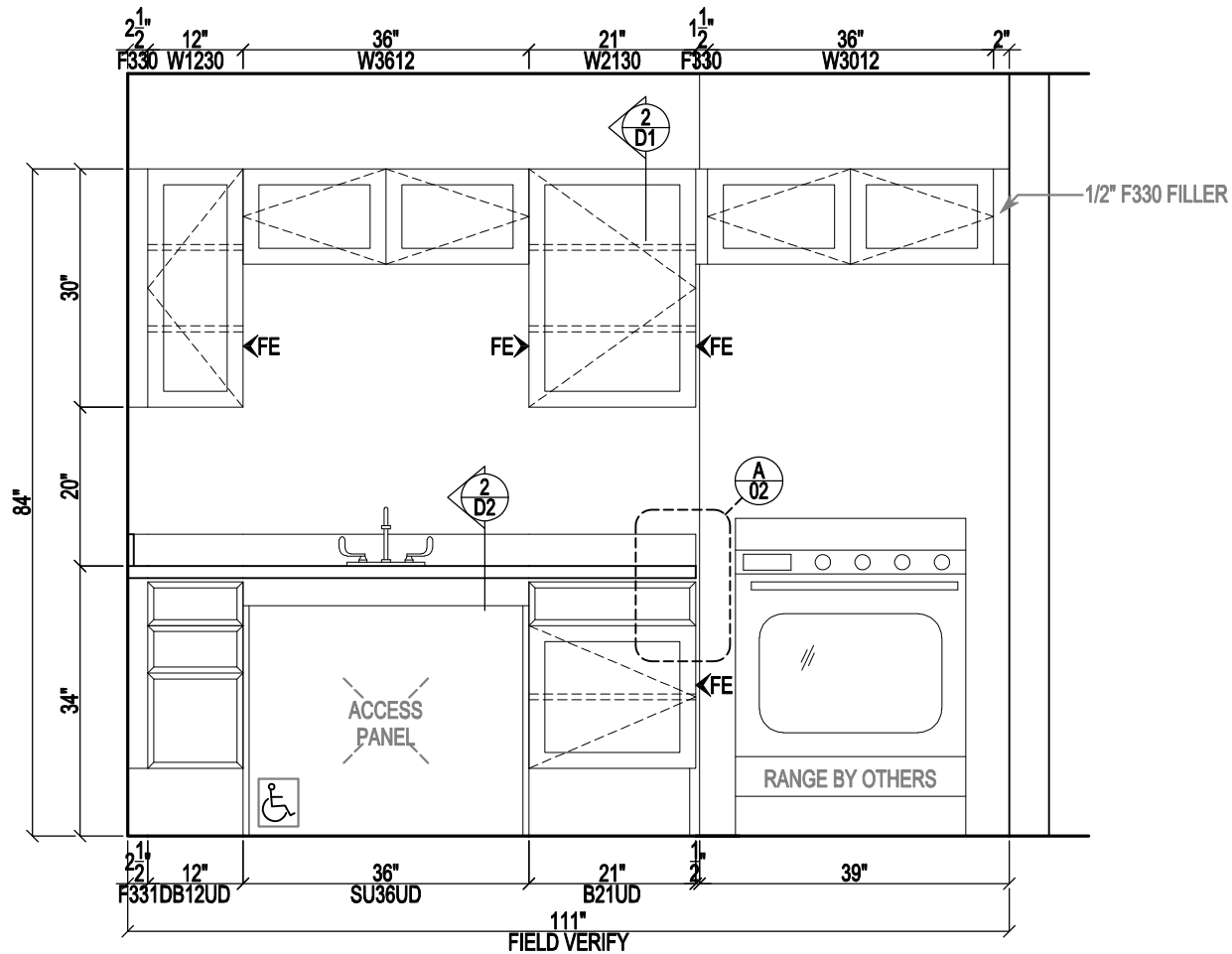
City Lumber
Company, Inc.

Union University
Student Housing Phase III

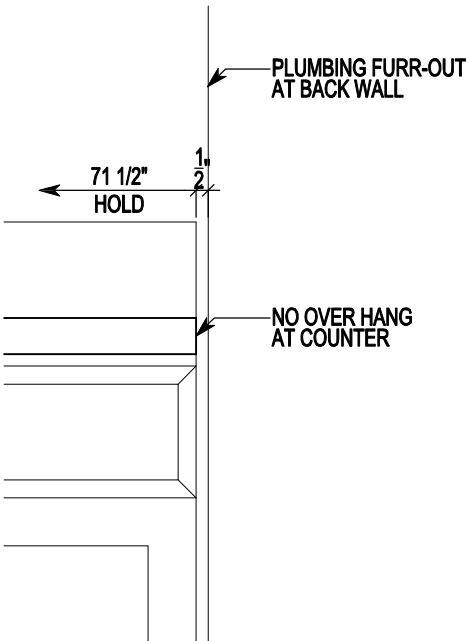
ORIGINAL ISSUE:	4-13-10
FIRST REVISION:	4-21-10
SECOND REVISION:	5-14-10
THIRD REVISION:	
ARCHITECT:	
AMS JOB #:	
QUICK DRAW:	0043
DRAWN BY:	BAI



ROOM SCHEDULE: KITCHENS HANDICAP			
QTY:		BUILDING:	
1	1	55 FIRST FLOOR	
2	0	47 FIRST FLOOR "A"	
3	0	47 FIRST FLOOR "B"	
(1) TOTAL QUANTITY			



2	KITCHEN HANDICAP	
	COUNTER / SPLASH:	PLASTIC LAMINATE
PLAN:	-	CABINET EXTERIORS: HAMMOND OAK / WHEAT
ELEV:	-	
SECT:	-	



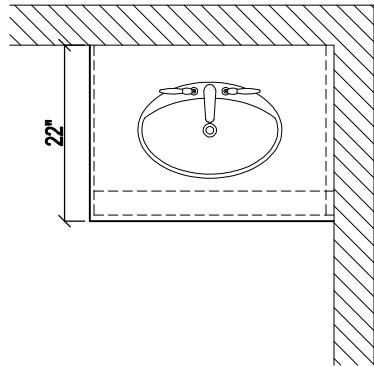
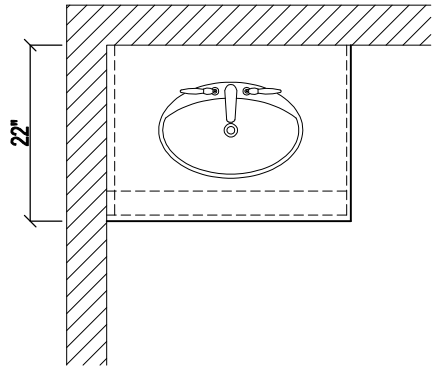
A	FINISHED END DETAIL -	
	COUNTER / SPLASH:	PLASTIC LAMINATE
PLAN:	-	CABINET EXTERIORS: HAMMOND OAK / WHEAT
ELEV:	-	
SECT:	-	

P. O. Box 1983
Jackson, Tennessee 38302
Phone (731) 427-9631
Fax (731) 424-5707
Email: wmtaylor@amsllc-tn.com

City Lumber
Company, Inc.

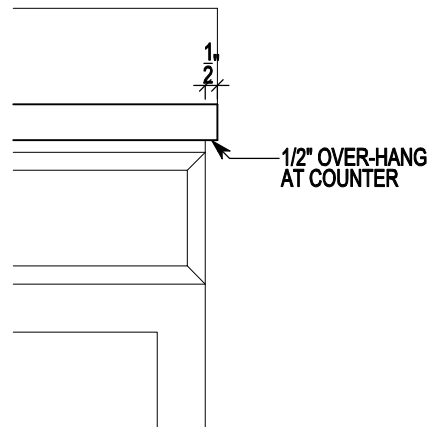
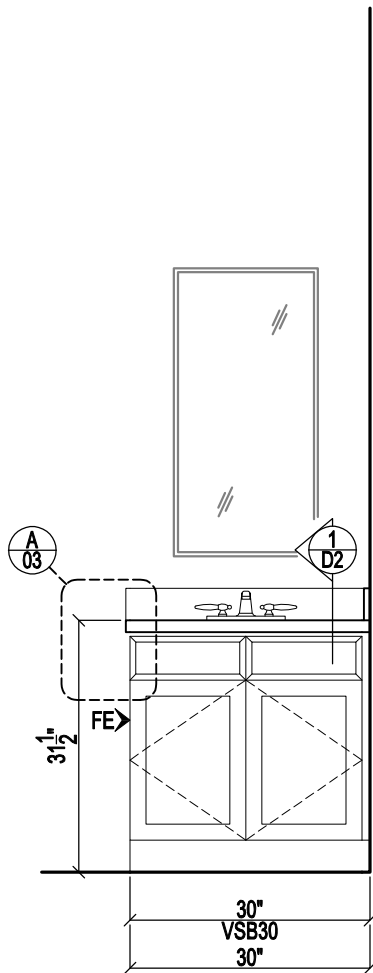
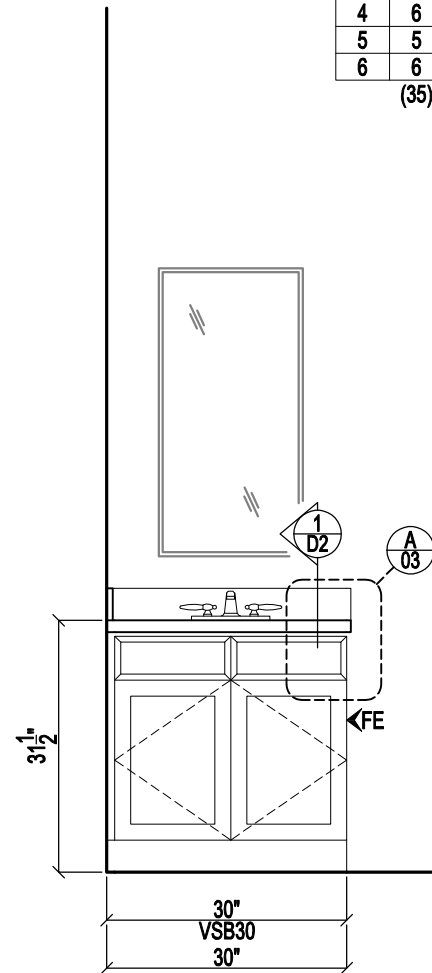
Union University
Student Housing Phase III

ORIGINAL ISSUE:
4-13-10
FIRST REVISION:
4-21-10
SECOND REVISION:
5-14-10
THIRD REVISION:
ARCHITECT:
AMS JOB #:
QUICK DRAW:
0043
DRAWN BY:
BAI



FINISHED - RIGHT ROOM SCHEDULE: RESTROOMS			
	QTY:	BUILDING:	
1	6	55 FIRST FLOOR	
2	7	55 SECOND FLOOR	
3	5	47 FIRST FLOOR "A"	
4	6	47 SECOND FLOOR "A"	
5	5	47 FIRST FLOOR "B"	
6	6	47 SECOND FLOOR "B"	
(35) TOTAL QUANTITY			

FINISHED - LEFT ROOM SCHEDULE: RESTROOMS			
	QTY:	BUILDING:	
1	6	55 FIRST FLOOR	
2	7	55 SECOND FLOOR	
3	5	47 FIRST FLOOR "A"	
4	6	47 SECOND FLOOR "A"	
5	5	47 FIRST FLOOR "B"	
6	6	47 SECOND FLOOR "B"	
(35) TOTAL QUANTITY			



3	RESTROOM VANTIES -	
1/2" = 12"	COUNTER / SPLASH:	PLASTIC LAMINATE
PLAN:	CABINET EXTERIORS:	HAMMOND OAK / WHEAT
ELEV:		
SECT:		

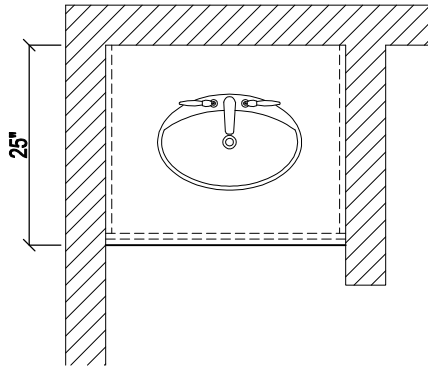
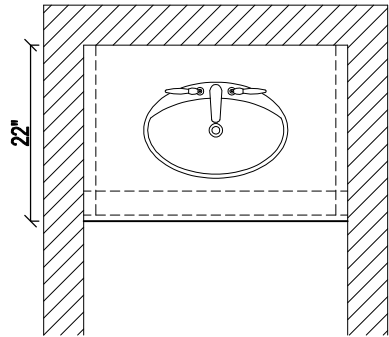
4	RESTROOM VANTIES -	
1/2" = 12"	COUNTER / SPLASH:	PLASTIC LAMINATE
PLAN:	CABINET EXTERIORS:	HAMMOND OAK / WHEAT
ELEV:		
SECT:		

A	FINISHED END DETAIL -	
1/2" = 12"	COUNTER / SPLASH:	PLASTIC LAMINATE
PLAN:	CABINET EXTERIORS:	HAMMOND OAK / WHEAT
ELEV:		
SECT:		

City Lumber
Company, Inc.
P. O. Box 1983
Jackson, Tennessee 38302
Phone (731) 427-9631
Fax (731) 424-5707
Email: wmtaylor@amsllc-tn.com

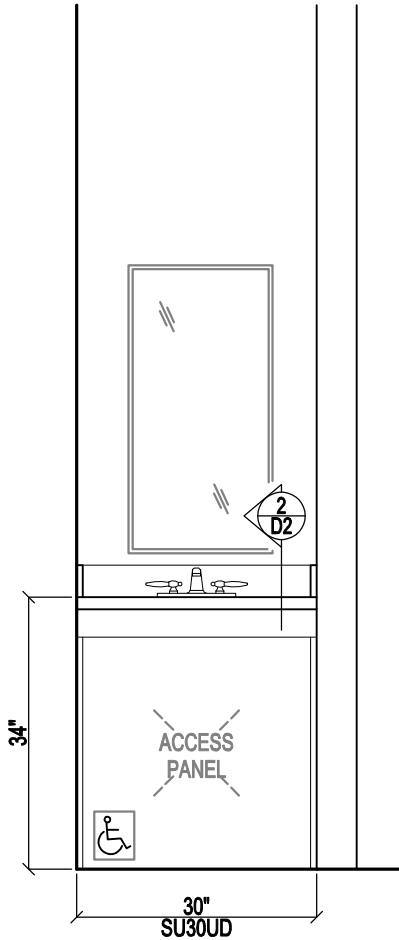
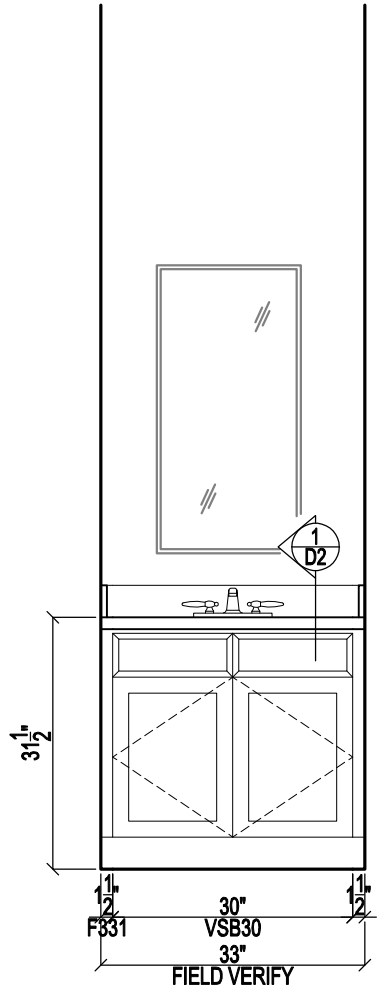
Union University
Student Housing Phase III

ORIGINAL ISSUE:	4-13-10
FIRST REVISION:	4-21-10
SECOND REVISION:	5-14-10
THIRD REVISION:	
ARCHITECT:	
AMS JOB #:	
QUICK DRAW:	0043
DRAWN BY:	BAI



WALL TO WALL: ROOM SCHEDULE: RESTROOMS			
	QTY:	BUILDING:	
1	1	47 FIRST FLOOR "A"	
2	1	47 FIRST FLOOR "B"	
(2) TOTAL QUANTITY			

ROOM SCHEDULE: RESTROOMS HANDICAP			
	QTY:	BUILDING:	
1	1	55 FIRST FLOOR	
2	0	47 FIRST FLOOR "A"	
3	0	47 FIRST FLOOR "B"	
(1) TOTAL QUANTITY			



5	RESTROOM VANTIES		-
1/2" = 12"	COUNTER / SPLASH:	PLASTIC LAMINATE	
PLAN:	-	CABINET EXTERIORS:	HAMMOND OAK / WHEAT
ELEV:	-		
SECT:	-		

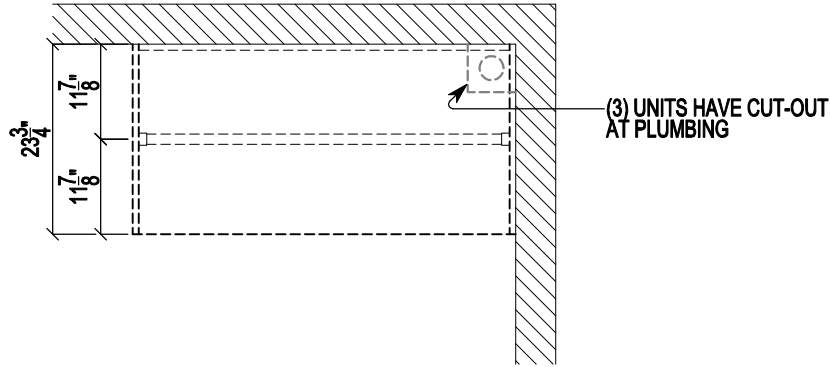
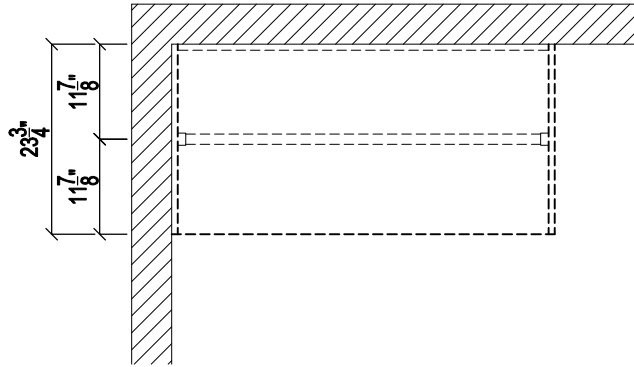
6	RESTROOM VANTIES HANDICAP		-
1/2" = 12"	COUNTER / SPLASH:	PLASTIC LAMINATE	
PLAN:	-	CABINET EXTERIORS:	HAMMOND OAK / WHEAT
ELEV:	-		
SECT:	-		

P. O. Box 1983
Jackson, Tennessee 38302
Phone (731) 427-9631
Fax (731) 424-5707
Email: wmtaylor@amsllc-tn.com

City Lumber
Company, Inc.

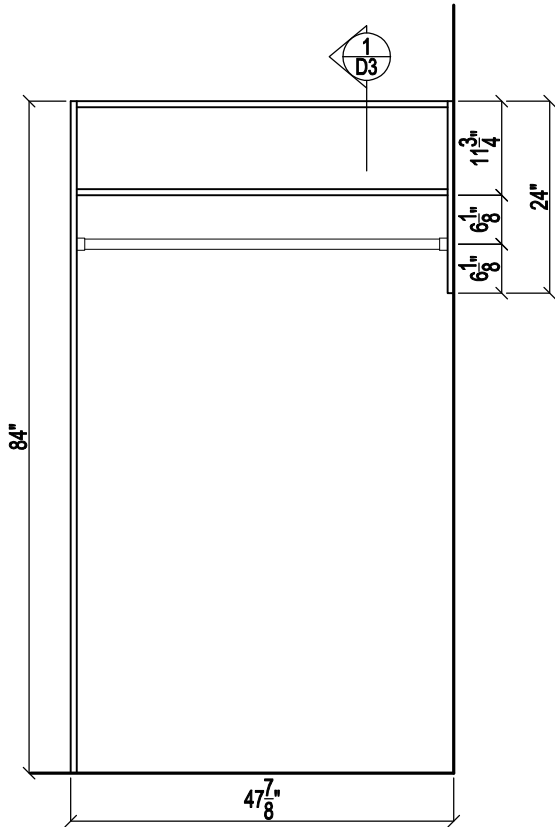
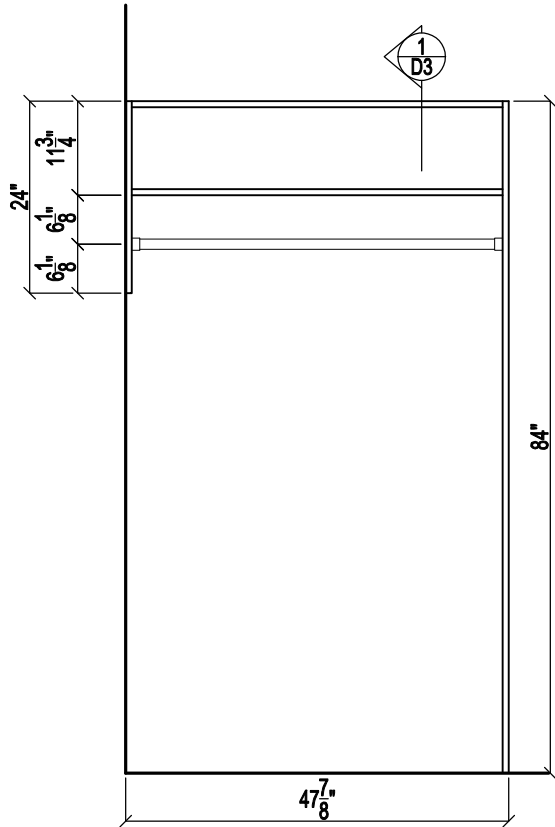
Union University
Student Housing Phase III

ORIGINAL ISSUE:
4-13-10
FIRST REVISION:
4-21-10
SECOND REVISION:
5-14-10
THIRD REVISION:
ARCHITECT:
AMS JOB #:
QUICK DRAW:
0043
DRAWN BY:
BAI



FINISHED - RIGHT			
ROOM SCHEDULE: WARDROBES AT BEDROOMS			
	QTY:	BUILDING:	
1	13	55 FIRST FLOOR	
2	14	55 SECOND FLOOR	
3	11	47 FIRST FLOOR "A"	
4	12	47 SECOND FLOOR "A"	
5	11	47 FIRST FLOOR "B"	
6	12	47 SECOND FLOOR "B"	
(73) TOTAL QUANTITY			

FINISHED - LEFT			
ROOM SCHEDULE: WARDROBES AT BEDROOMS			
	QTY:	BUILDING:	
1	14	55 FIRST FLOOR	
2	14	55 SECOND FLOOR	
3	12	47 FIRST FLOOR "A"	
4	12	47 SECOND FLOOR "A"	
5	12	47 FIRST FLOOR "B"	
6	12	47 SECOND FLOOR "B"	
(76) TOTAL QUANTITY			



7	RESTROOM VANTIES HANDICAP		
1/2" = 12"	CABINET EXTERIORS: 3/4" WHITE MELAMINE		
PLAN:	-	EDGE BAND:	3mm WHITE PVC
ELEV:	-		
SECT:	-	COAT ROD:	POLISHED CHROME

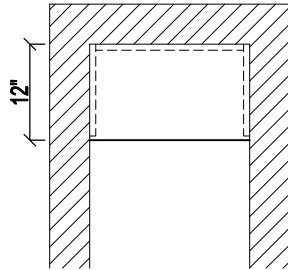
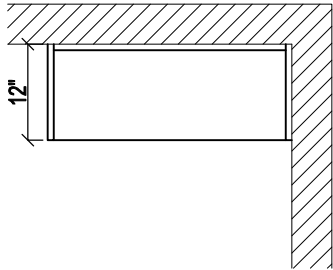
8	RESTROOM VANTIES HANDICAP		
1/2" = 12"	CABINET EXTERIORS: 3/4" WHITE MELAMINE		
PLAN:	-	EDGE BAND:	3mm WHITE PVC
ELEV:	-		
SECT:	-	COAT ROD:	POLISHED CHROME

Union University
Student Housing Phase III

P. O. Box 1983
Jackson, Tennessee 38302
Phone (731) 427-9631
Fax (731) 424-5707
Email: wmtaylor@amsllc-tn.com

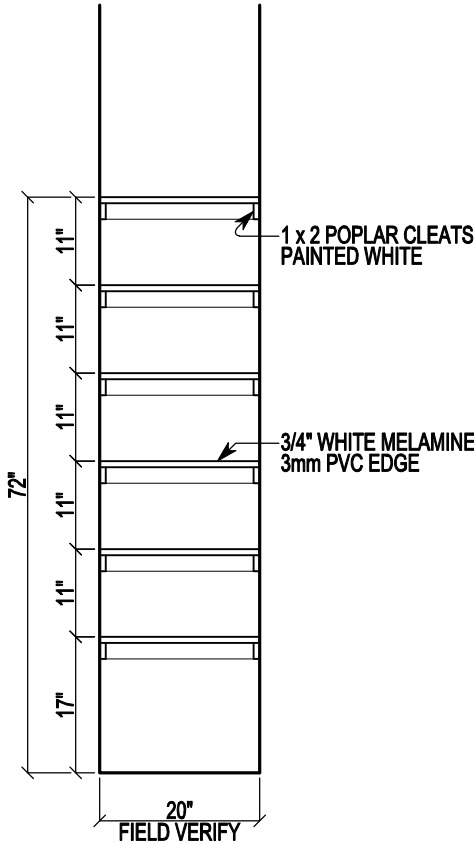
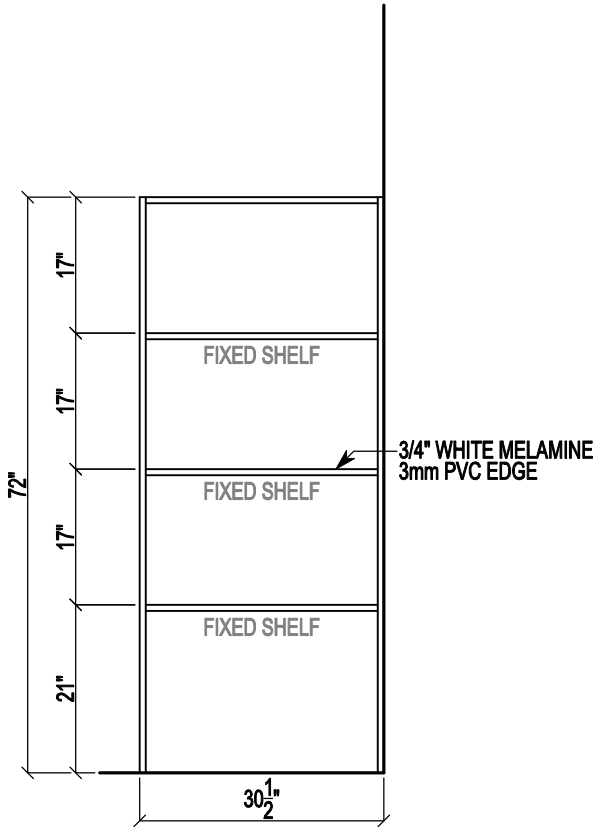
City Lumber
Company, Inc.

ORIGINAL ISSUE:
4-13-10
FIRST REVISION:
4-21-10
SECOND REVISION:
5-14-10
THIRD REVISION:
ARCHITECT:
AMS JOB #:
QUICK DRAW:
0043
DRAWN BY:
BAI



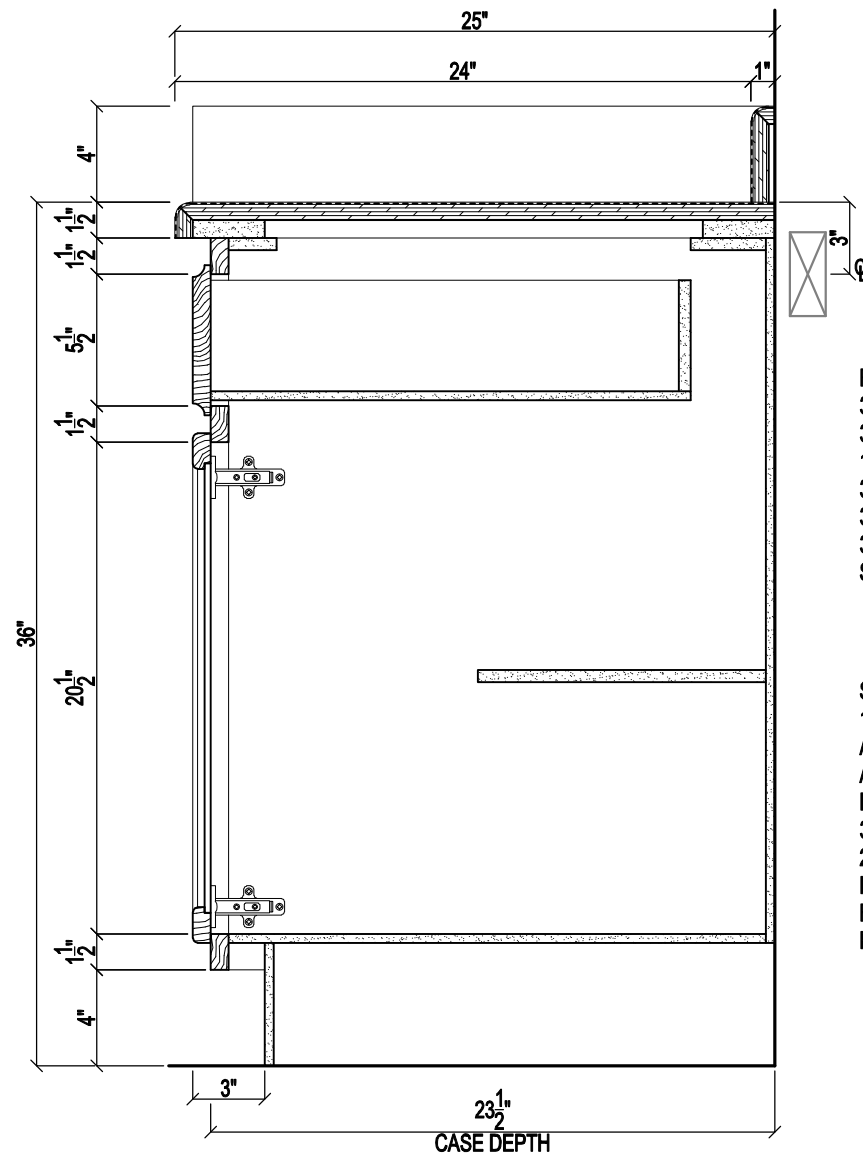
ROOM SCHEDULE: RESTROOMS HANDICAP LINEN			
	QTY:	BUILDING:	
1	1	55 FIRST FLOOR	
2	1	47 FIRST FLOOR "A"	
3	1	47 FIRST FLOOR "B"	
(3) TOTAL QUANTITY			

ROOM SCHEDULE: RESTROOMS LINEN			
	QTY:	ROOM:	FIELD VERIFY:
1	6	55 FIRST FLOOR	
2	14	55 SECOND FLOOR	
3	5	47 FIRST FLOOR "A"	
4	12	47 SECOND FLOOR "A"	
5	5	47 FIRST FLOOR "B"	
6	12	47 SECOND FLOOR "B"	
(54) 47 SECOND FLOOR "B"			



9 HANDICAP RESTROOM - LINEN			
1/2" = 12"		CABINET EXTERIORS:	3/4" WHITE MELAMINE
PLAN:	-	CABINET INTERIORS:	3/4" WHITE MELAMINE
ELEV:	-	EDGE:	3mm WHITE PVC
SECT:	-		

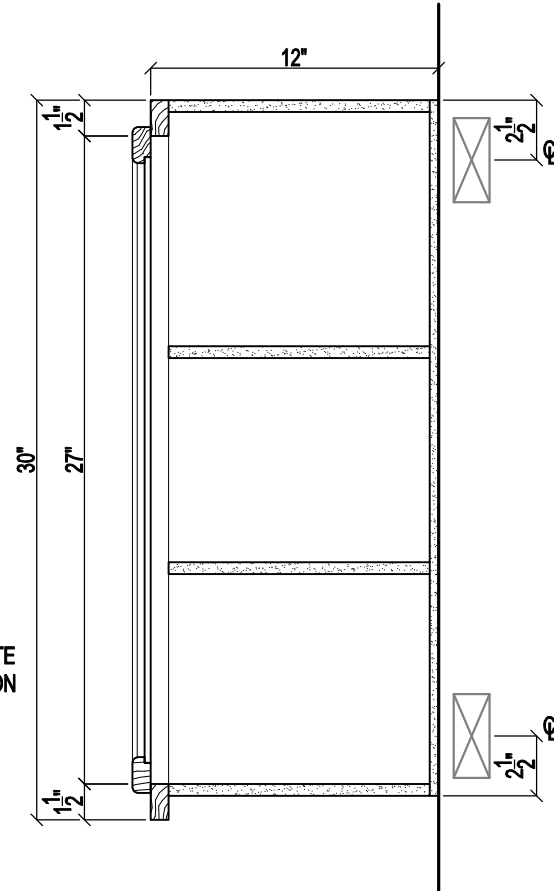
10 STANDARD RESTROOM - LINEN			
1/2" = 12"		FIXED SHELVES:	3/4" WHITE MELAMINE
PLAN:	-	EDGE:	3mm WHITE PVC
ELEV:	-	WALL CLEATS	1 x POPLAR PAINTED WHITE
SECT:	-		



FOUR FURNITURE BOARD CORNER BRACES
3/8" FURNITURE BOARD BACK PANEL
3/4" x 1 1/2" SOLID WOOD FACE FRAME (3" CENTER STILES)
1/2" HALF-DEPTH FURNITURE BOARD SHELF
3/8" FURNITURE BOARD BOTTOM PANEL
3/8" FURNITURE BOARD SIDES WITH MATCHING LAMINATE
3/8" x 4" FURNITURE BOARD RECESSED TOEKICK
STANDARD CABINET INTERIOR NATURAL MAPLE LAMINATE

SELF-CLOSING EPOXY COATED, 100#
1/2" FURNITURE BOARD SIDES & BACK TO MATCH
ARISTEX INTERIOR LAMINATE
ADJUSTABLE SIDE MOUNT DOUBLE RAIL DRAWER GUIDES
DOUBLE ROLLERS FOR SMOOTHER ACTION
3/8" FURNITURE BOARD DRAWER BOTTOM WITH ARISTEX LAMINATE
20" DEEP DRAWER BOX WITH STAPLED BUTT JOINT CONSTRUCTION
DRAWER BOTTOM STAPLED INTO SIDES, FRONT & BACK
RAIL CAPTURED TWO SIDES TO PREVENT EXCESS PLAY
BUILT-IN DRAWER STOP

1		TYPICAL BASE CABINET		-
1 1/2" = 12"		COUNTER / SPLASH:	PLASTIC LAMINATE	
PLAN:	-	CABINET EXTERIORS:	HAMMOND OAK / WHEAT	
ELEV:	-			
SECT:	-	INTERIORS:	NATURAL MAPLE	



1/2" FURNITURE BOARD TOP PANEL
3/8" FURNITURE BOARD SIDE PANELS WITH MATCHING LAMINATE
1/2" FURNITURE BOARD ADJUSTABLE SHELVES
3/4" x 1 1/2" SOLID WOOD FACE FRAME
3/8" FURNITURE BOARD BACK PANEL
1/2" FURNITURE BOARD BOTTOM PANEL
STANDARD CABINET INTERIOR NATURAL MAPLE LAMINATE

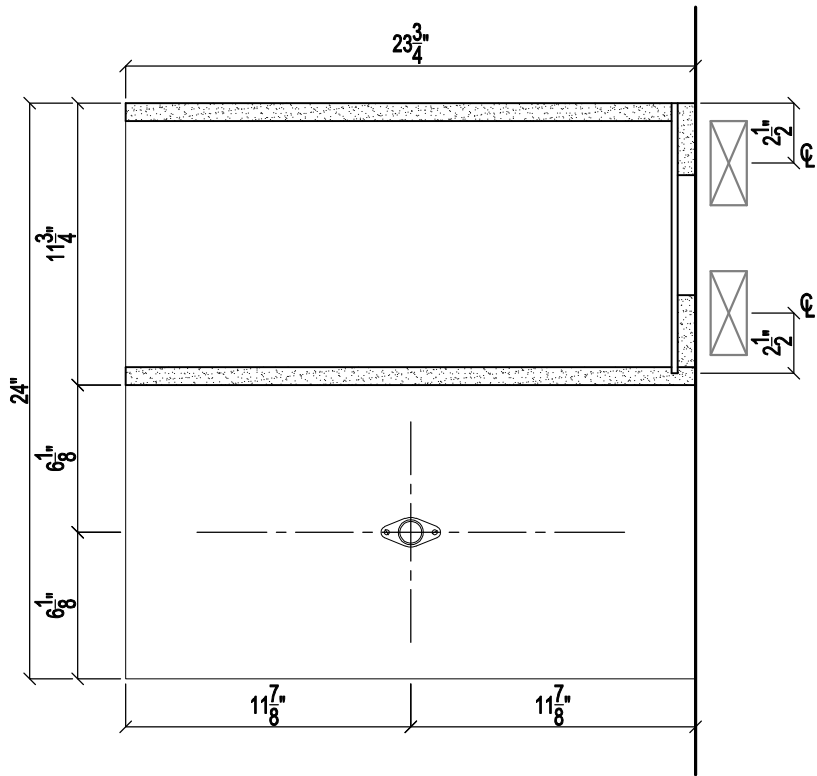
2		TYPICAL WALL CABINET		-
1 1/2" = 12"				
PLAN:	-	CABINET EXTERIORS:	HAMMOND OAK / WHEAT	
ELEV:	-			
SECT:	-	INTERIORS:	NATURAL MAPLE	

P. O. Box 1983
Jackson, Tennessee 38302
Phone (731) 427-9631
Fax (731) 424-5707
Email: wmtaylor@amsllc-tn.com

City Lumber
Company, Inc.

Union University
Student Housing Phase III

ORIGINAL ISSUE:
4-13-10
FIRST REVISION:
4-21-10
SECOND REVISION:
5-14-10
THIRD REVISION:
ARCHITECT:
AMS JOB #:
QUICK DRAW:
0043
DRAWN BY:
BAI



1		WARDROBE SECTION -	
1 1/2" = 12"		CABINET EXTERIORS: 3/4" WHITE MELAMINE	
PLAN:	-	EDGEBAND:	3mm WHITE PVC
ELEV:	-		
SECT:	-	COAT ROD:	POLISHED CHROME

Union University
Student Housing Phase III

City Lumber
Company, Inc.

P. O. Box 1983
Jackson, Tennessee 38302
Phone (731) 427-9631
Fax (731) 424-5707
Email: wmtaylor@amslc-tn.com

ORIGINAL ISSUE:
4-13-10
FIRST REVISION:
4-21-10
SECOND REVISION:
5-14-10
THIRD REVISION:
ARCHITECT:
AMS JOB #:
QUICK DRAW:
0043
DRAWN BY:
BAI