

# SKOKIE POLICE DEPARTMENT HEADQUARTERS

VILLAGE OF SKOKIE  
SKOKIE, IL 60077  
WALL PANELS

ARCHITECT:  
SRBL ARCHITECTS  
1161-A LAKE COOK ROAD  
DEERFIELD, ILLINOIS 60015  
PH: 847.272.9500 FX: 847.272.9510

CONTRACTOR:  
W.B. OLSON  
3235 ARNOLD LANE  
NORTHBROOK, IL

## WALL QUESTIONS

- SHOULD THE ACOUSTICAL PANEL FABRIC "GRAIN" MATCH THE FOLDING WALL FABRIC WIDTH "GRAIN" ?
- MAX FABRIC WIDTH IS 54".  
A TIGHT BACK SEWN FABRIC SEAM WILL BE VISIBLE ON LARGER ACOUSTICAL PANELS.
- SEE COMING MOCK UP FOR EXACT DETAILS.
- IS 3MM WOOD EDGEBAND OK, IF SUPPLIED WITH OUT RADIUS EDGE?

 **Key Products**  
Interior Environments  
11111 Franklin Avenue  
Franklin Park, IL 60131  
Tel (847) 288-0500

NOT FOR FABRICATION!

 **Key Products**  
Interior Environments  
11111 Franklin Avenue  
Franklin Park, IL 60131  
Tel (847) 288-0500

**SKOKIE POLICE DEPARTMENT  
HEADQUARTERS**  
7300 NILES CENTER ROAD  
SKOKIE, IL 60077

ORIGINAL ISSUE:
07-29-09
FIRST REVISION:
08-03-09
SECOND REVISION:
09-30-09
THIRD REVISION:
ARCHITECT:
07127
KEY PRODUCTS:
17409
QUICK DRAW:
9108
DRAWN BY:
HLC

**COVER**

## DRAWINGS INDEX:

[illegible]

**SECTIONS & DETAILS:**

**D1 - D6**

## FINISH SELECTIONS:

### ACOUSTICAL PANELS:

**PLEASE CONFIRM FINISH LOCATIONS**

AP	MAHARAM FABRIC - PATTERN = SWICTH #901620, COLOR = CERTAIN #102
WOOD PANELS:	
WP	PLAIN SLICED CHERRY VENEER - FINISH TO MATCH WILSONART WILLIAMSBURG CHERRY #7936K-07
METAL PANELS:	
MP	ALUMINUM
MARKER BOARD:	
MB	1/4" WHITE LAMINATED GLASS WITH POLISHED EDGES

**NOTE:** These submittal drawings indicate materials and finishes in accordance with our most recent quote and our interpretation of the plans and specifications. Please thoroughly review and mark any necessary corrections. Project materials and finishes will be per shop drawings, unless noted otherwise.

## PROJECT SPECIFICATION:

**WOOD PANELS:**

**TO BE MANUFACTURED BY KEY PRODUCTS OF FLAT CUT CHERRY VENEER, FINISHED TO MATCH ARCHITECT SAMPLE.**

## SPECIAL NOTES

- ALL MILLWORK ITEMS TO BE MADE WITH SKYBLEND PARTICLE BOARD TO MEET LOW VOC REQUIREMENTS.
- ALL LAMINATES AND VENEER TO BE APPLIED WITH WATERBASED PVS GLUE. NO CONTACT GLUE ALLOWED.
- PROVIDE 2 96" LONG X 1" D X 1/4" H ALUMINUM SHELVES
- ACOUSTICAL PANELS ARE COMPOSED OF 1/2" THICK, ACOUSTICAL COMPOSTED MATERIAL LAMINATED TO 1/4" HARDBOARD
- WE RECOMMEND ALL FABRIC PANELS TO BE HUNG FROM THE MOUNTING RAIL. THIS ALLOWS THE FABRIC TO FULLY WRAP THE EDGES AND ELIMINATES THE POSSIBILITY OF THE FABRIC FRAYING AT THE EDGES.
- ALL FABRIC AND WOOD PANELS TO HAVE MOUNTING RAIL SPAN ENTIRE WIDTH OF PANEL AND WALL. THIS IS TO ELIMINATE ANY POSSIBILITY OF THE PANELS BOWING AFTER INSTALLATION.
- ALL EXPOSED ENDS OF WOOD WALL PANELS ARE TO HAVE FINISHED RETUENS.  
SEE DETAIL PAGE FOR SECTION VIEW.
- SPECIAL REVEAL NOTE = A 1/4" WIDE, ALUMINUM REVEAL IS STANDARD BETWEEN ALL WOOD PANELS BOTH VERTICAL AND HORIZONTAL
- NO GAP IS BETWEEN FABRIC PANELS OR BETWEEN GLASS WHITEBOARDS AND WOOD PANELS.

## SPECIAL NOTES

- ALL WOOD GRAIN IS VERTICAL.
- ALL WOOD GRAIN TO MATCH FROM TOP TO BOTTOM OF EACH PANEL RUN.
- ALL PANELS OVER MAX VENEER WIDTH TO HAVE TIGHT VERTICAL VENEER SEAM IN EXACT CENTER OF PANEL.

These drawings indicate the products to be custom manufactured and adjacent work that may affect fabrication and installation. Refer to our most recent quote for the exact items to be supplied. Fabrication begins after these drawings are approved and returned. Dimensions and jobsite conditions will be verified prior to fabrication. To avoid delays and misinterpretations, review and return in a timely manner. Should these drawings be revised, Key Products Interiors reserves the right to amend price and/or production schedules.

**WARRANTIES:** Void if environment (humidity) does not meet (AWI) climatic specifications or damage by others.



**SKOKIE POLICE DEPARTMENT  
HEADQUARTERS**  
7300 NILES CENTER ROAD  
SKOKIE, IL 60077

**ORIGINAL ISSUE:**

07-29-09

**FIRST REVISION:**

08-03-09

**SECOND REVISION:**

09-30-09

**THIRD REVISION:**

ARCHITECT:

07127

**KEY PRODUCTS:**  
**17100**

17409  


---

QUICK DRAW:

**QUICK DRAW:**  
**9108**

DRAWN BY:

## HLC

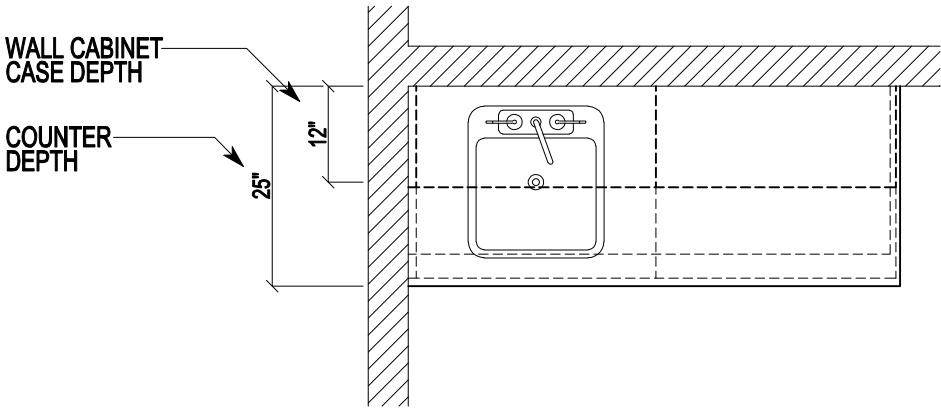
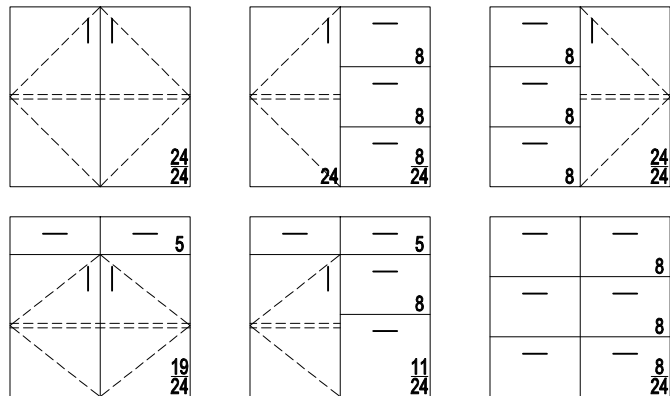
## INDEX

32mm Cabinet Construction:

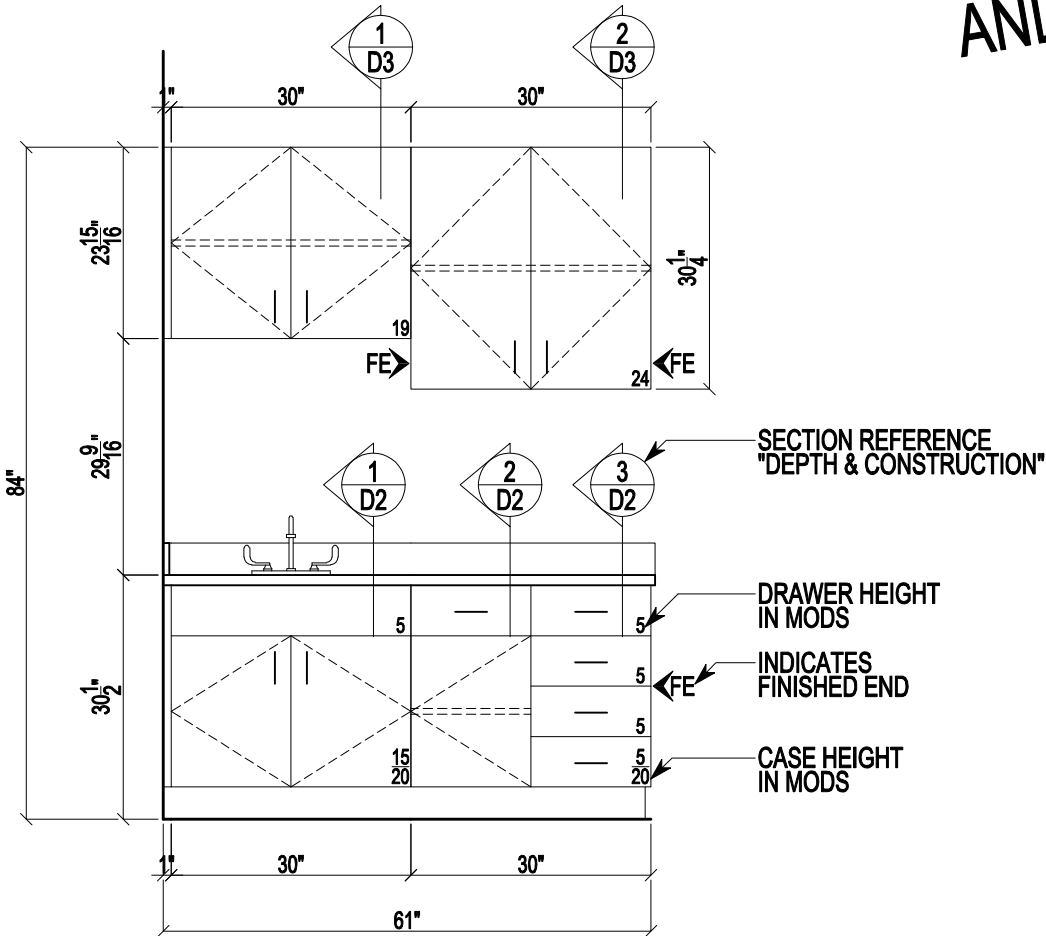
The 32mm system for building cabinets is an integrated manufacturing process of materials, hardware and machinery. Cabinet parts and hardware are in precision alignment with the 32mm linebore holes inside the cabinet box. Hardware installation is faster and alignment issues eliminated. Cabinets boxes are built in increments of 32mm and cabinet heights are critical for maintaining the integrity of the system. . Doors and drawers fronts combined total equal the height of the cabinet box. Cabinet widths and depths are limited only by material sizes. The 32mm system standardizes part sizes and drilling patterns maximizing efficiency and quality control in the manufacturing process. The streamlined process delivers a higher quality product to the jobsite quicker, while minimizing the need for onsite adjustments.

Additional benefits include:

- Easy vertical adjustment of shelves
- Quickly add or remove shelves as required
- Reconfiguration of individual cabinets
- Replacement parts



SAMPLE PLAN  
AND ELEVATION



ELEVATION NUMBER	ROOM DESCRIPTION	ROOM NUMBER
1	BREAKROOM	105
SCALE	COUNTER / SPLASH: PLASTIC LAMINATE	MATERIALS OR COLOR SELECTIONS
ARCHITECTURAL REFERENCES	COUNTER SUPPORTS: PLASTIC LAMINATE	
	CABINET EXTERIORS: PLASTIC LAMINATE	
	CLOSED INTERIORS: MELAMINE	
	OPEN INTERIORS: PLASTIC LAMINATE	

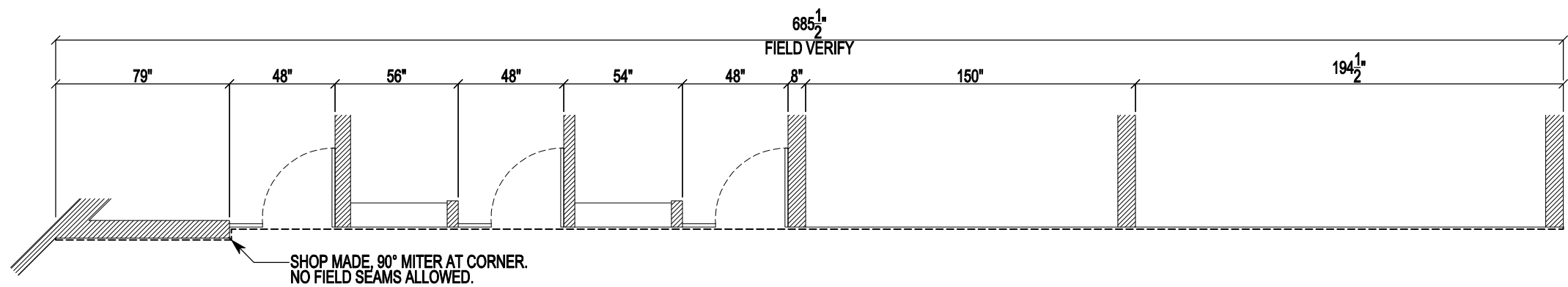
Key Products  
Interior Environments  
1111 Franklin Avenue  
Franklin Park, IL 60131  
Tel (847) 288-0500

SKOKIE POLICE DEPARTMENT  
HEADQUARTERS  
7300 NILES CENTER ROAD  
SKOKIE, IL 60077

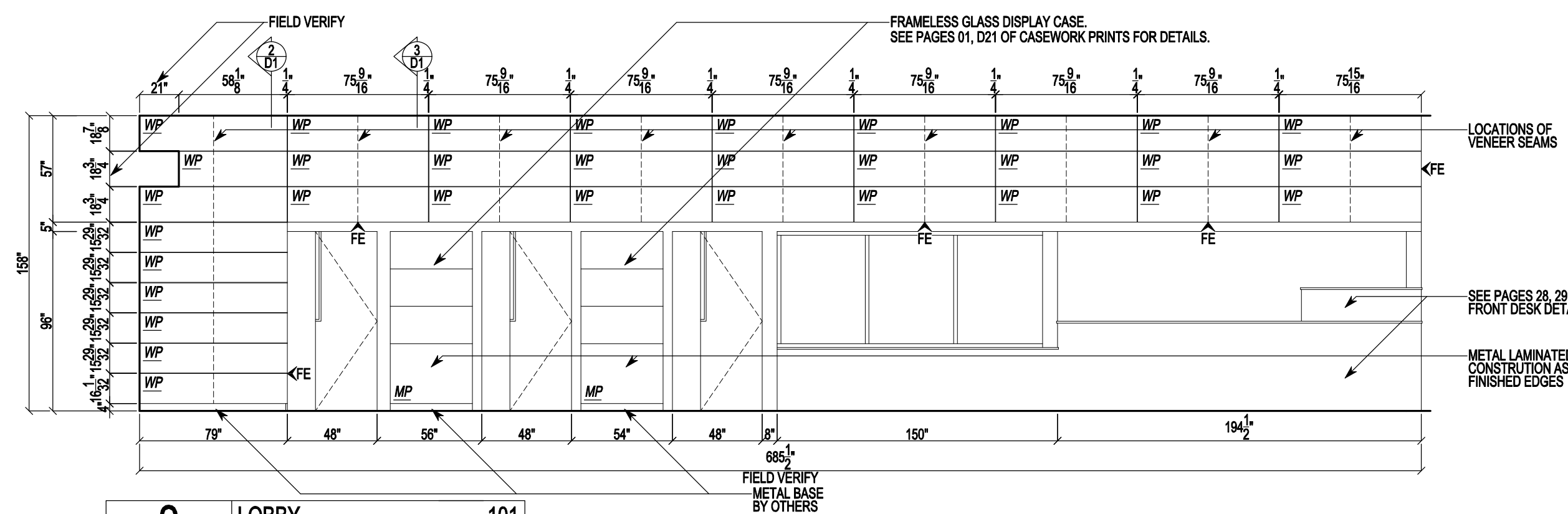
ORIGINAL ISSUE:	07-29-09
FIRST REVISION:	08-03-09
SECOND REVISION:	09-30-09
THIRD REVISION:	
ARCHITECT:	07127
KEY PRODUCTS:	17409
QUICK DRAW:	9108
DRAWN BY:	HLC

SAMPLE





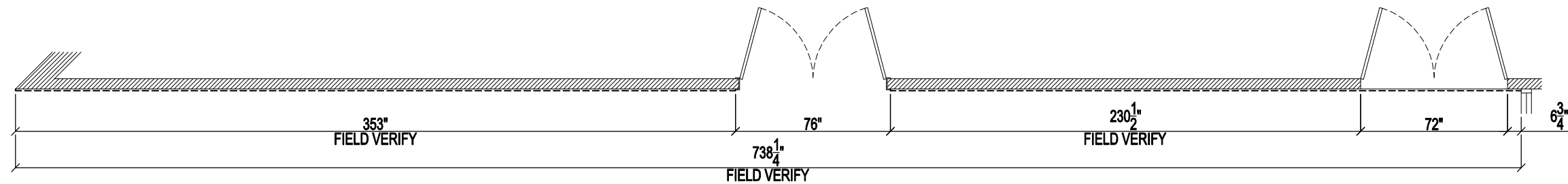
WOOD GRAIN TO RUN VERTICAL AND MATCH ON ALL PANEL STACKS.



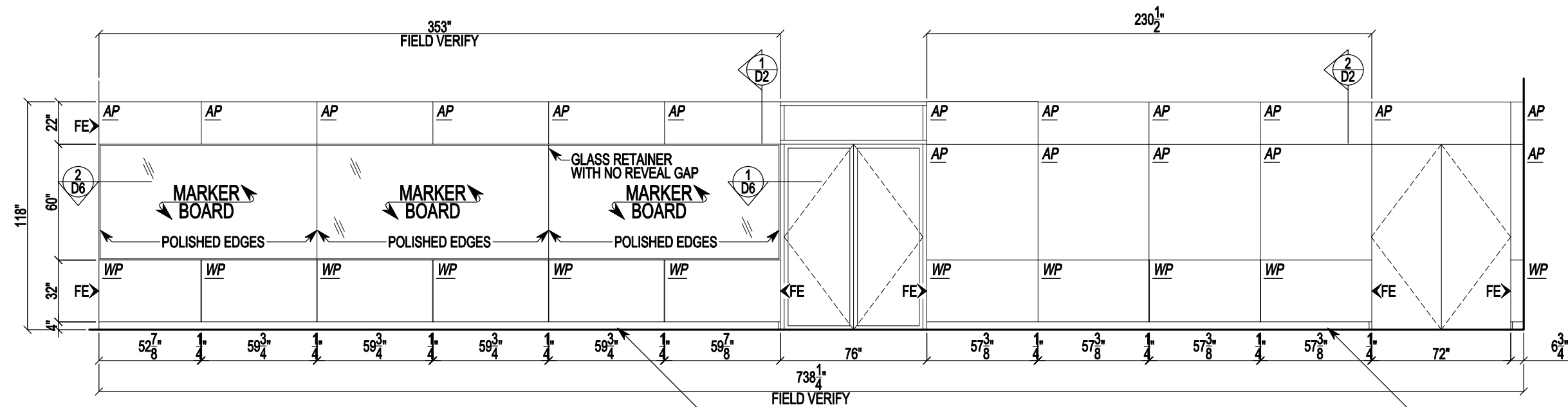
<b>2</b>		<b>LOBBY</b>	<b>101</b>
3/16" = 12"		WALL PANELS:	PLAIN SLICED CHERRY VENEER
PLAN: A3.3		METAL PANELS:	ALUMINUM
ELEV: 3 / A10.1		REVEAL STRIP:	1/8" X 1" ANODIZED ALUM.
SECT:		BASE TRIM:	1/8" X 4" ALUMINUM
		WP	BY OTHERS
		MP	

**SKOKIE POLICE DEPARTMENT  
HEADQUARTERS**  
7300 NILES CENTER ROAD  
SKOKIE, IL 60077

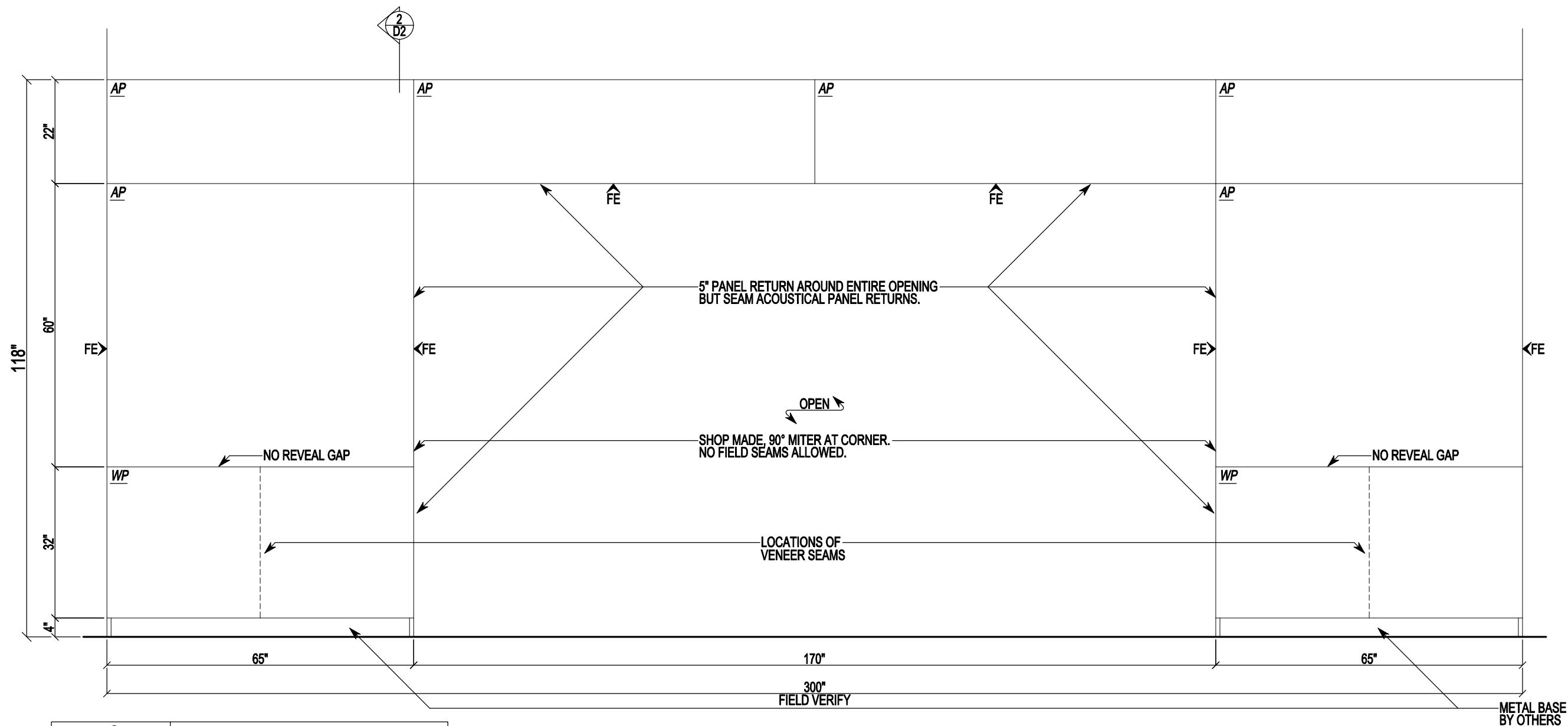
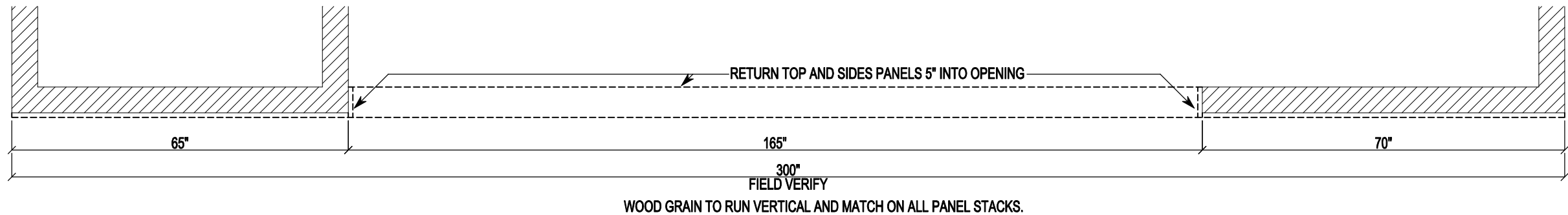
ORIGINAL ISSUE:	07-29-09
FIRST REVISION:	08-03-09
SECOND REVISION:	09-30-09
THIRD REVISION:	
ARCHITECT:	07127
KEY PRODUCTS:	17409
QUICK DRAW:	9108
DRAWN BY:	HLC



WOOD GRAIN TO RUN VERTICAL AND MATCH ON ALL PANEL STACKS.



<b>3</b>	<b>TRAINING</b>	<b>112</b>
3/16" = 12"	WALL PANELS:	PLAIN SLICED CHERRY VENEER
PLAN: A3.3	ACOUSTICAL PANELS:	MAHARAM FABRIC
ELEV: 5/A10.1	REVEAL STRIP:	1/8" X 1" ANODIZED ALUM.
SECT:	BASE TRIM:	1/8" X 4" ALUMINUM
	MARKER BOARD:	1/4" GLASS / WHITE PLAM.
		WP
		AP
		BY OTHERS
		MB



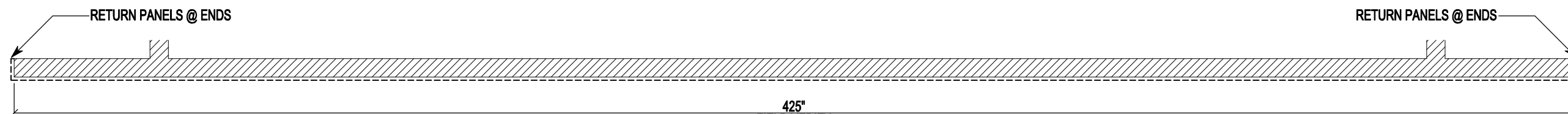
<b>4</b>		<b>TRAINING</b>	<b>112</b>
1/2" = 12"		WALL PANELS:	PLAIN SLICED CHERRY VENEER
PLAN: A3.3		ACOUSTICAL PANELS:	MAHARAM FABRIC
ELEV: 6 / A10.1		REVEAL STRIP:	1/8" X 1" ANODIZED ALUM.
SECT:		BASE TRIM:	1/8" X 4" ALUMINUM

WP  
AP  
BY OTHERS

**Key Products**  
Interior Environments  
1111 Franklin Avenue  
Franklin Park, IL 60131  
Tel (847) 288-0500

**SKOKIE POLICE DEPARTMENT  
HEADQUARTERS**  
7300 NILES CENTER ROAD  
SKOKIE, IL 60077

ORIGINAL ISSUE:	07-29-09
FIRST REVISION:	08-03-09
SECOND REVISION:	09-30-09
THIRD REVISION:	
ARCHITECT:	07127
KEY PRODUCTS:	17409
QUICK DRAW:	9108
DRAWN BY:	HLC



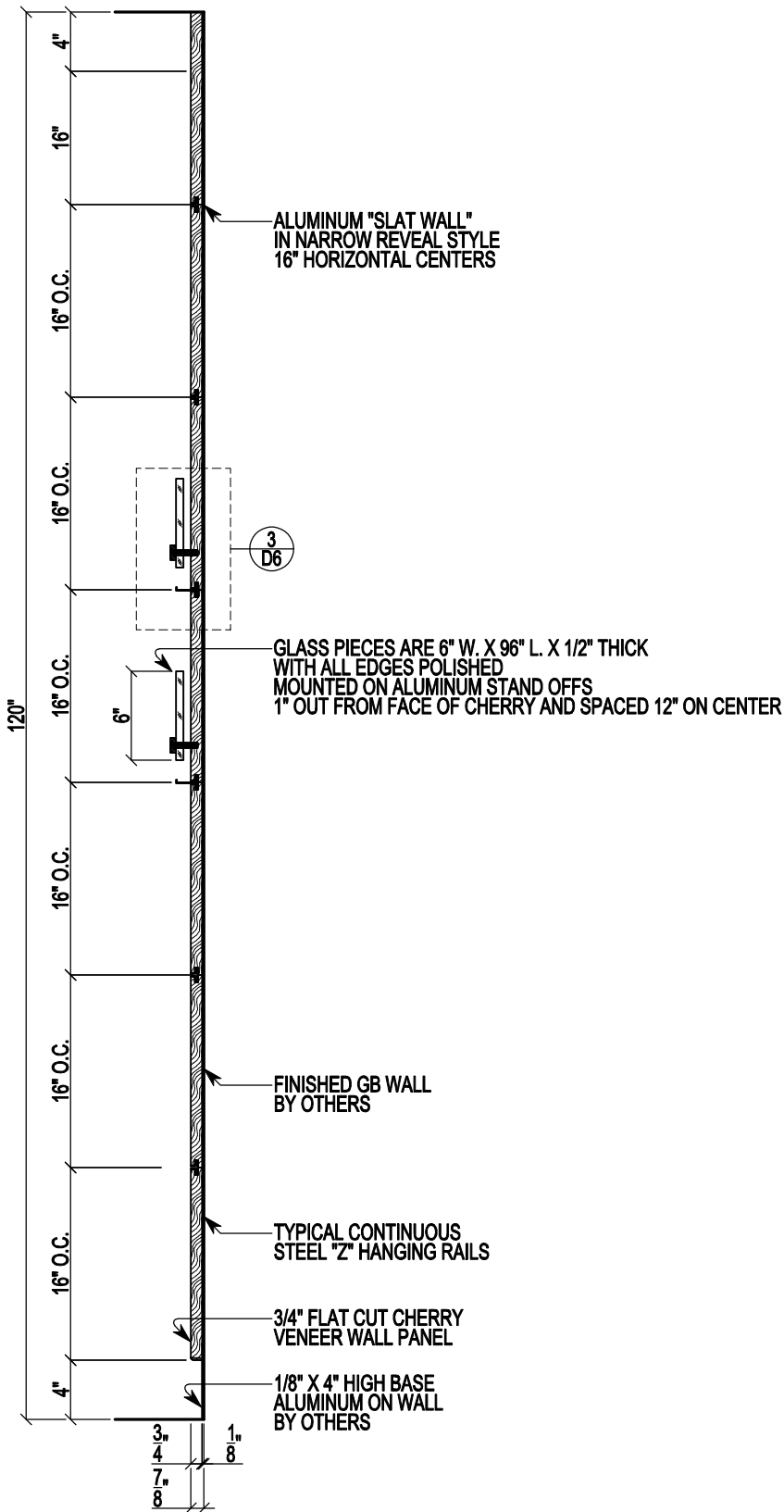
**NOTE: GLASS WHITEBOARD TO BE THE SAME SIZE**

<b>5</b>		<b>TRAINING</b>		<b>112</b>	<b>WP</b>
<b>3/8" = 12"</b>		<b>WALL PANELS:</b>	<b>PLAIN SLICED CHERRY VENEER</b>		
<b>PLAN:</b>	<b>A3.3</b>	<b>MARKER BOARD:</b>	<b>1/4" GLASS / WHITE PLAM.</b>		<b>BY OTHERS</b>
<b>ELEV:</b>	<b>8 / A10.1</b>	<b>REVEAL STRIP:</b>	<b>1/8" X 1" ANODIZED ALUM.</b>		
<b>SECT:</b>		<b>BASE TRIM:</b>	<b>1/8" X 4" ALUMINUM</b>		



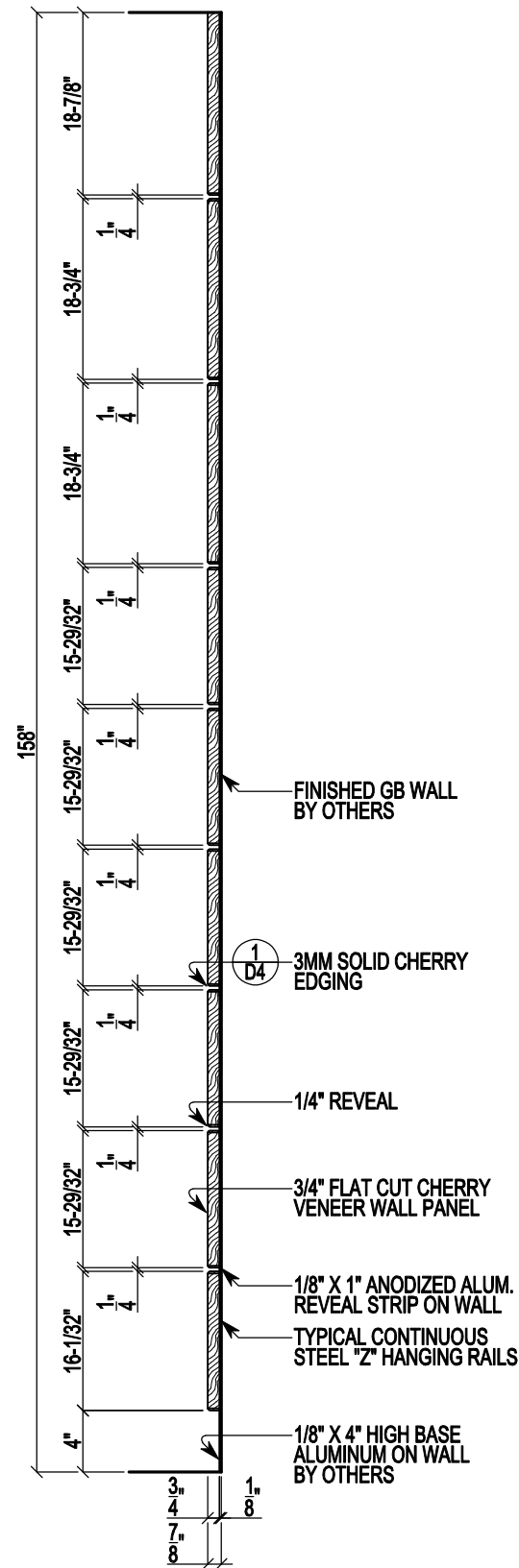


WP  
AP  
  
BY OTHERS  
MB



1	LOBBY 101	
1" = 12"	WALL PANELS:	PLAIN SLICED CHERRY VENEER
PLAN: A3.3	FROSTED GLASS:	1/2" POLISHED
ELEV: ADD3-A1	ALUMINUM SHELVES:	2" X 2" INVISIBLE 6 RETAIL
SECT: 4 OF 4	BASE TRIM:	1/8" X 4" ALUMINUM
	STAND OFFS:	ALUMINUM

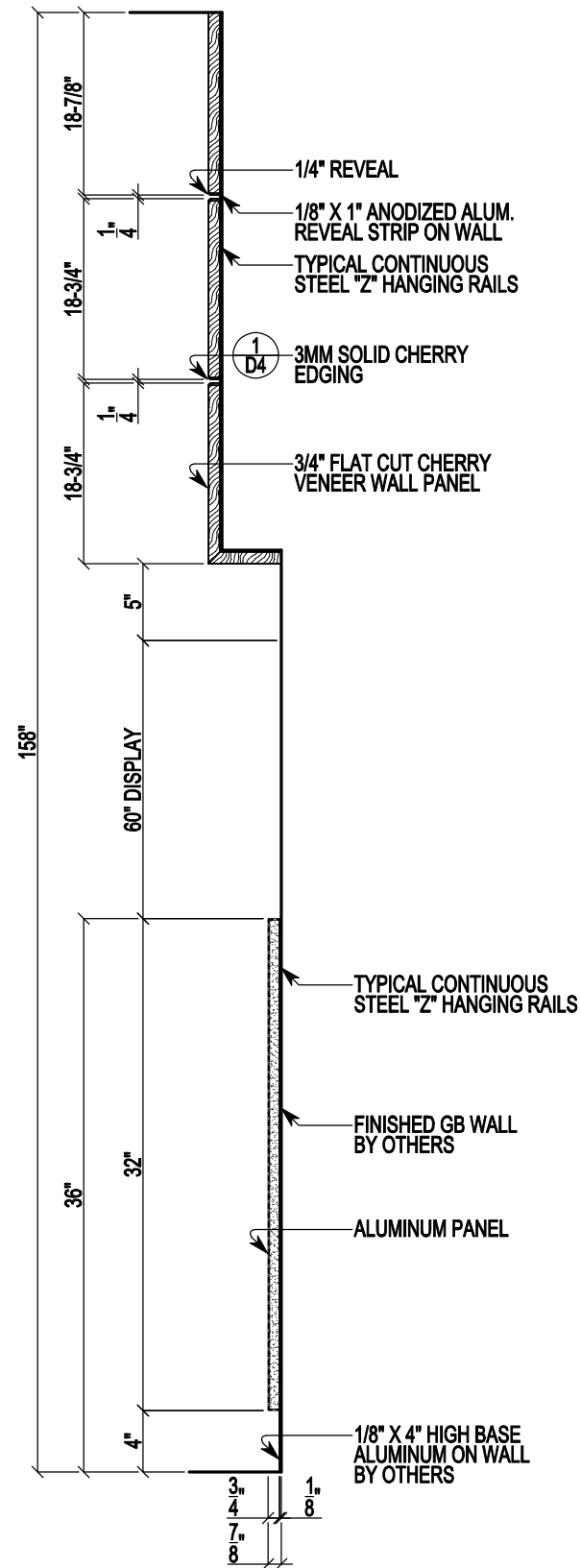
BY OTHERS



2	LOBBY 101	
1" = 12"	WALL PANELS:	PLAIN SLICED CHERRY VENEER
PLAN: A3.3	REVEAL STRIP:	1/8" X 1" ANODIZED ALUM.
ELEV: A10.1	BASE TRIM:	1/8" X 4" ALUMINUM
SECT:		

WP

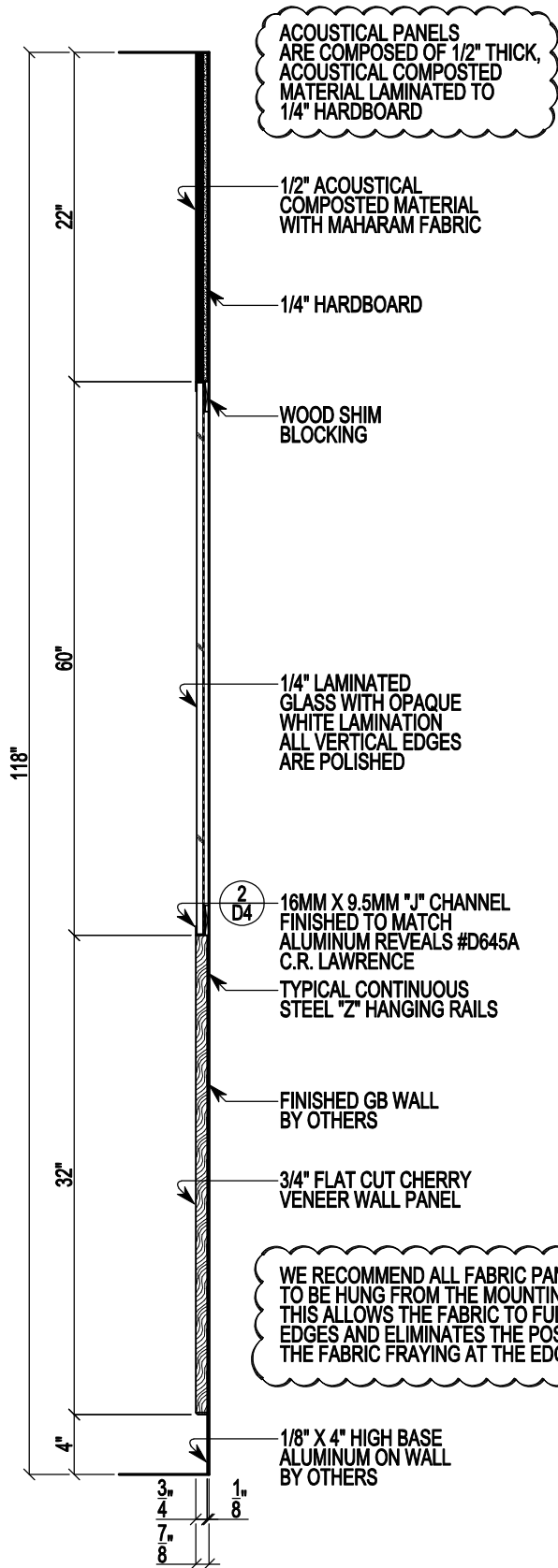
BY OTHERS



3	LOBBY 101	
1" = 12"	WALL PANELS:	PLAIN SLICED CHERRY VENEER
PLAN: A3.3	WALL PANEL EDGES:	3MM SOLID CHERRY
ELEV: A10.1	REVEAL STRIP:	1/8" X 1" ANODIZED ALUM.
SECT:	BASE TRIM:	1/8" X 4" ALUMINUM
	METAL PANELS:	ALUMINUM

WP

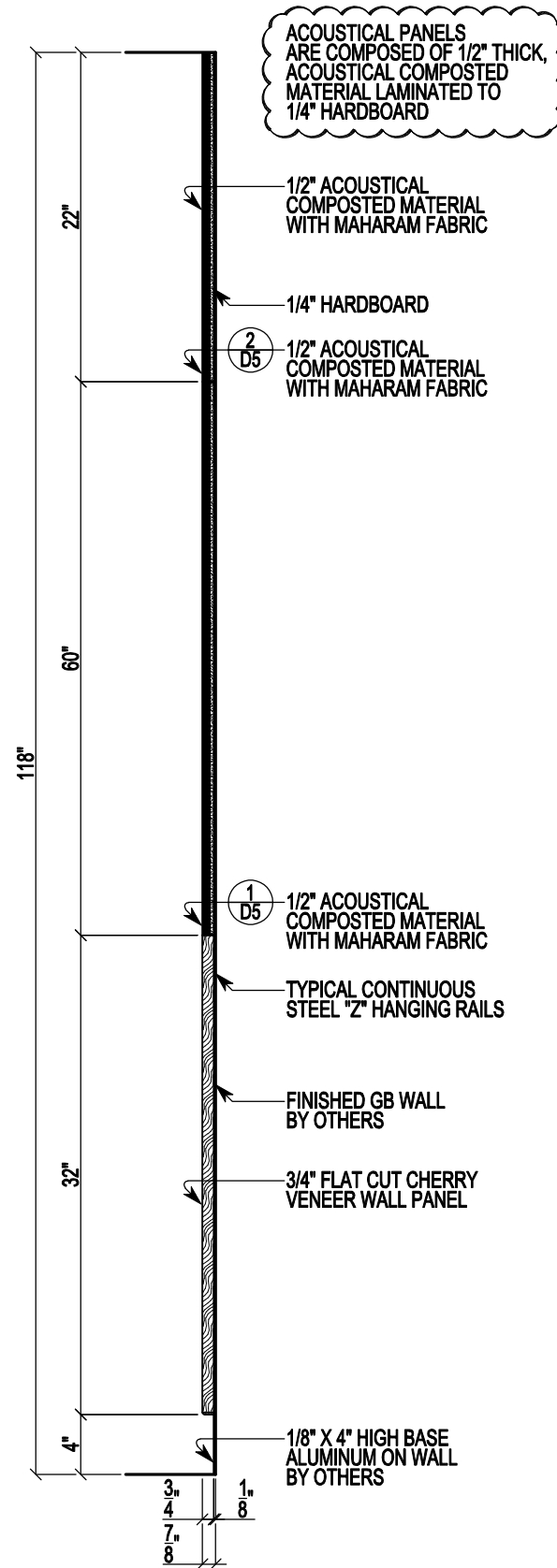
BY OTHERS  
MP



WE RECOMMEND ALL FABRIC PANELS TO BE HUNG FROM THE MOUNTING RAIL. THIS ALLOWS THE FABRIC TO FULLY WRAP THE EDGES AND ELIMINATES THE POSSIBILITY OF THE FABRIC FRAYING AT THE EDGES.

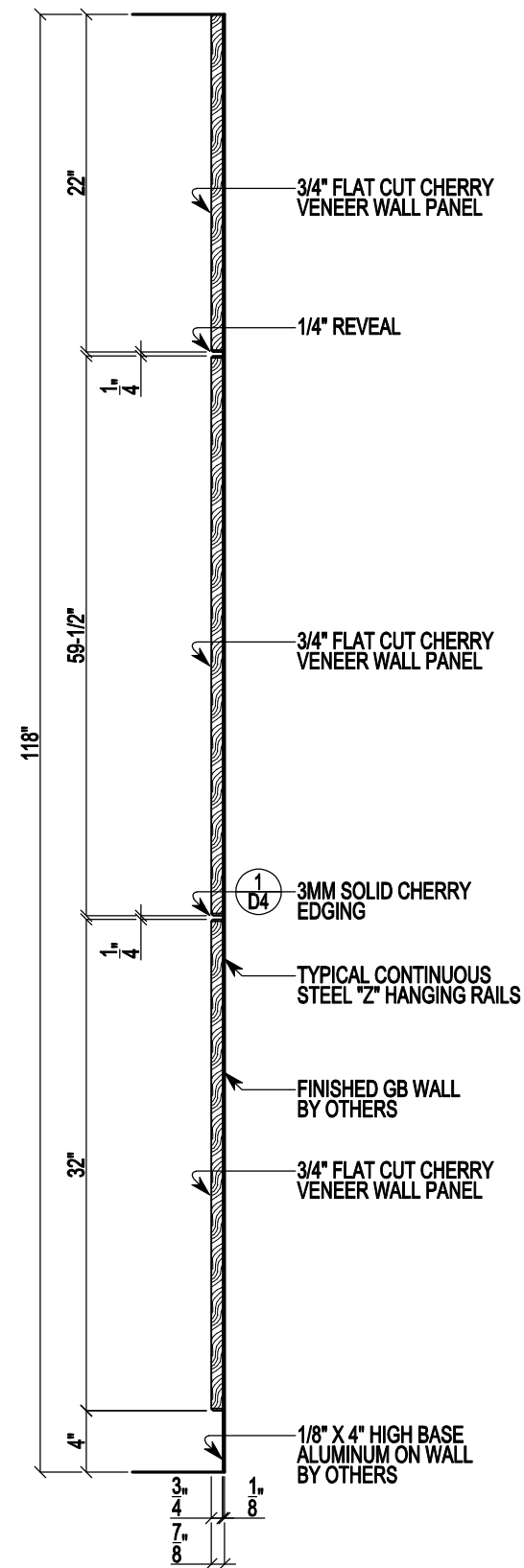
1	TRAINING	112
1" = 12"	WALL PANELS:	PLAIN SLICED CHERRY VENEER
PLAN: A3.3	ACOUSTICAL PANELS:	MAHARAM FABRIC
ELEV: A10.1	BASE TRIM:	1/8" X 4" ALUMINUM
SECT:	MARKER BOARD:	1/4" GLASS / WHITE PLAM.
	GLASS TRIM:	16MM X 9.5MM "J" CHANNEL

WP  
AP  
BY OTHERS  
MB



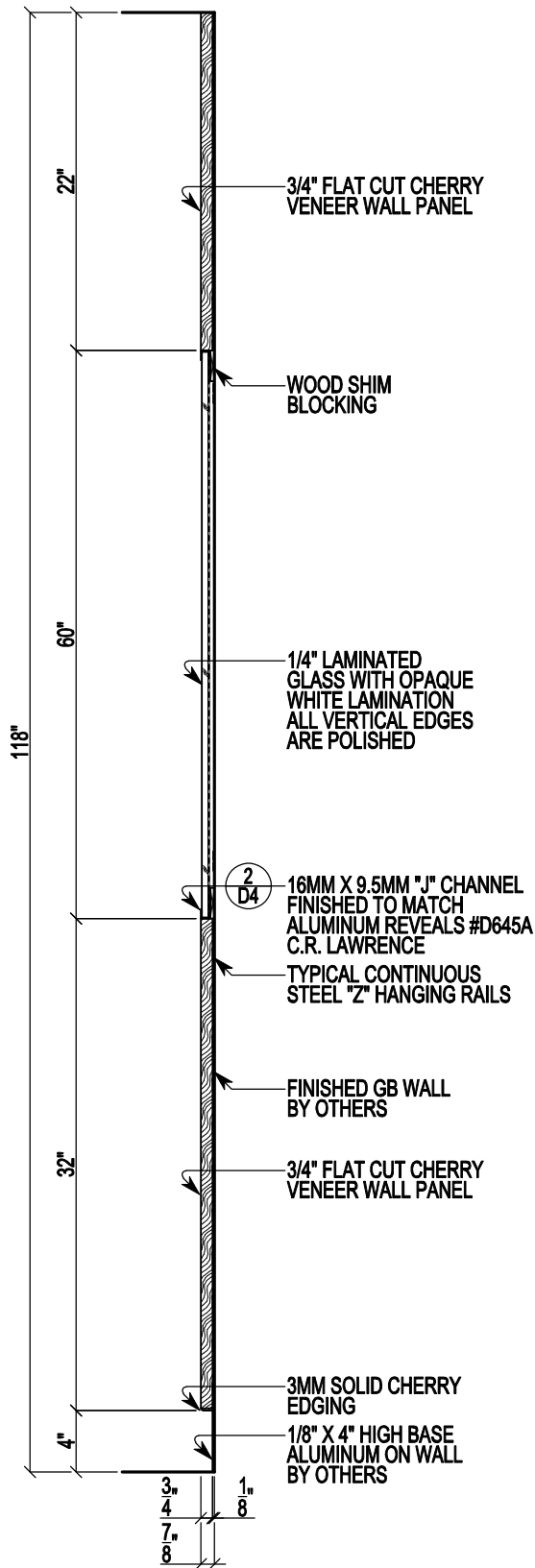
2	TRAINING	112
1" = 12"	WALL PANELS:	PLAIN SLICED CHERRY VENEER
PLAN: A3.3	ACOUSTICAL PANELS:	MAHARAM FABRIC
ELEV: A10.1	BASE TRIM:	1/8" X 4" ALUMINUM
SECT:		

WP  
AP  
BY OTHERS

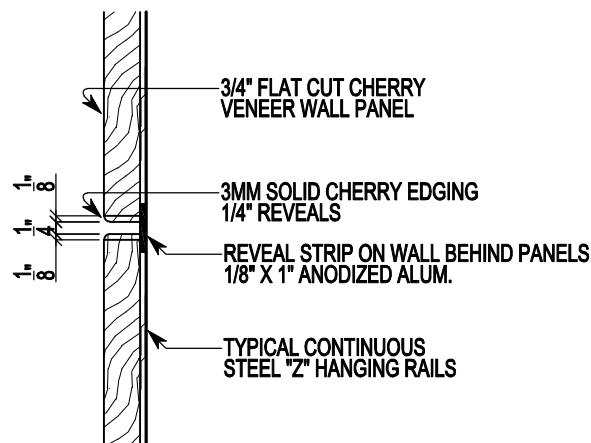


3	TRAINING	112
1" = 12"	WALL PANELS:	PLAIN SLICED CHERRY VENEER
PLAN: A3.3	WALL PANEL EDGES:	3MM SOLID CHERRY
ELEV: A10.1	REVEAL STRIP:	1/8" X 1" ANODIZED ALUM.
SECT:	BASE TRIM:	1/8" X 4" ALUMINUM

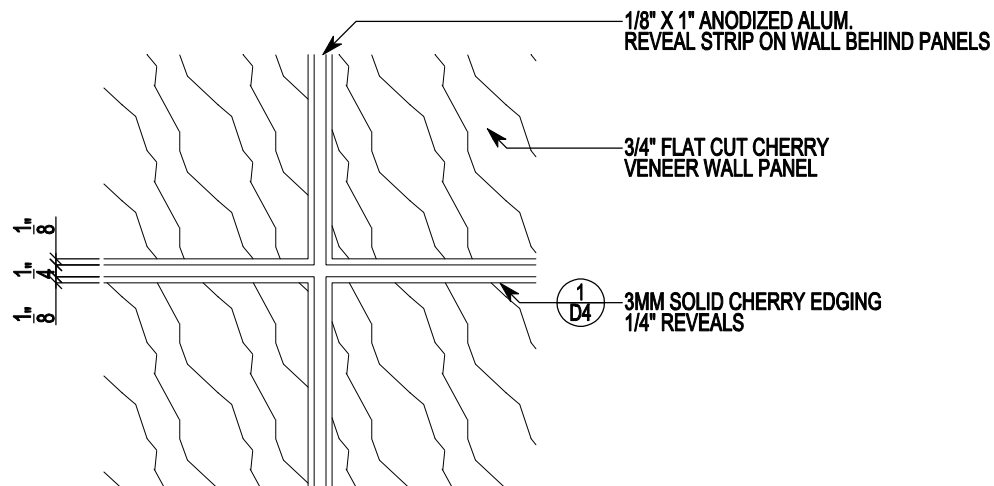
WP  
BY OTHERS



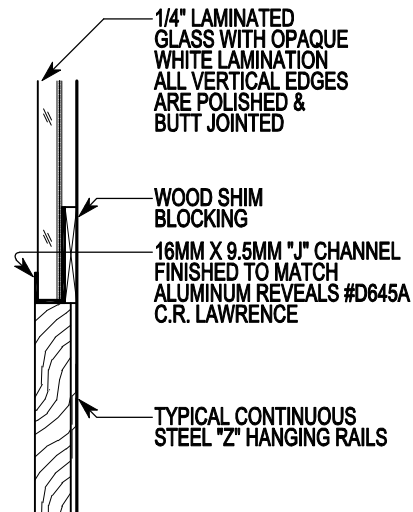
1		TRAINING		112
1" = 12"		WALL PANELS:	PLAIN SLICED CHERRY VENEER	WP
PLAN: A3.3		MARKER BOARD:	1/4" GLASS / WHITE PLAM.	
ELEV: A10.1		REVEAL STRIP:	1/8" X 1" ANODIZED ALUM.	
SECT:		BASE TRIM:	1/8" X 4" ALUMINUM	BY OTHERS



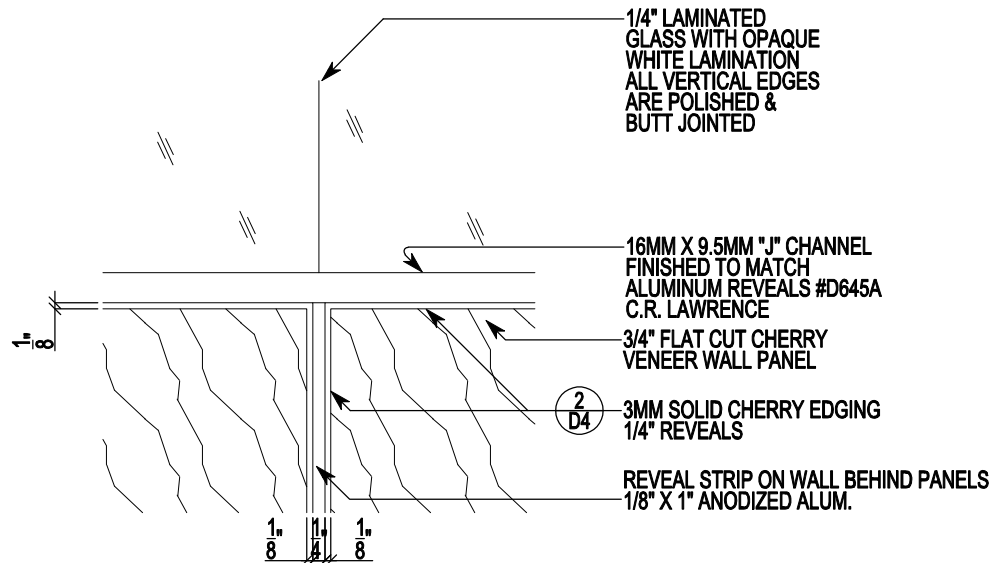
1 WOOD PANELS		
3" = 12"	WALL PANELS:	PLAIN SLICED CHERRY VENEER
PLAN: A3.3	WALL PANEL EDGES:	3MM SOLID CHERRY
ELEV: A10.1		
SECT:		



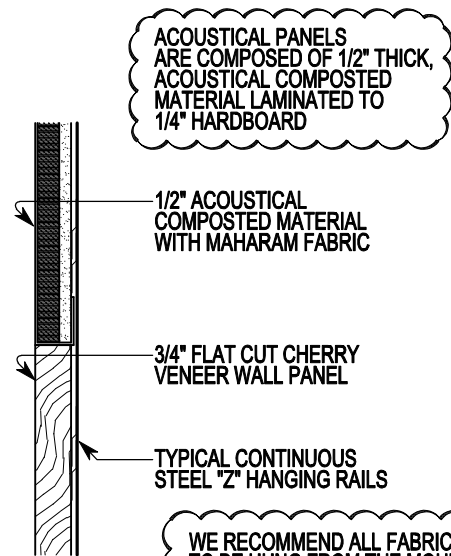
3 WOOD PANELS		
3" = 12"	WALL PANELS:	PLAIN SLICED CHERRY VENEER
PLAN: A3.3	WALL PANEL EDGES:	3MM SOLID CHERRY
ELEV: A10.1		
SECT:		



2 WOOD & MARKER PANELS		
3" = 12"	WALL PANELS:	PLAIN SLICED CHERRY VENEER
PLAN: A3.3	MARKER BOARD:	1/4" GLASS / WHITE PLAM.
ELEV: A10.1		
SECT:		

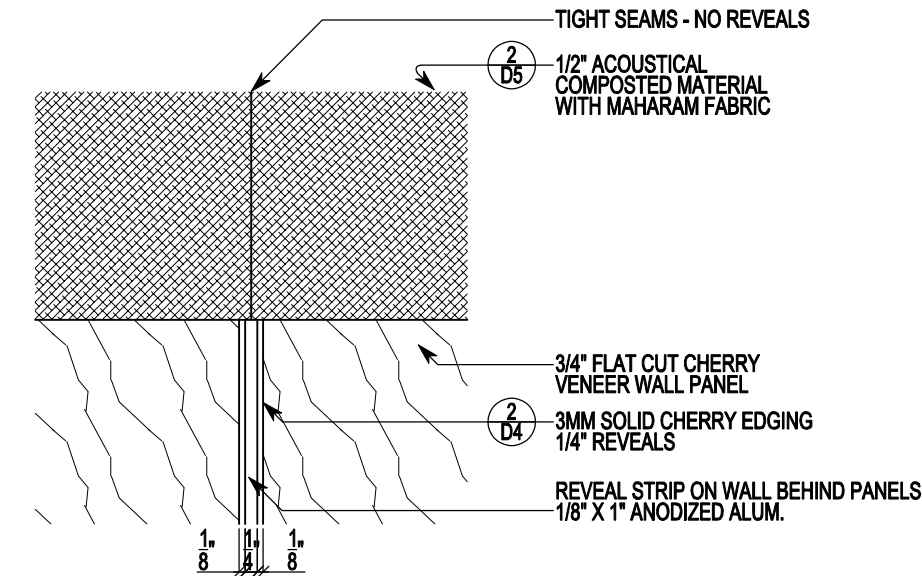


4 WOOD & MARKER PANELS		
3" = 12"	WALL PANELS:	PLAIN SLICED CHERRY VENEER
PLAN: A3.3	MARKER BOARD:	1/4" GLASS / WHITE PLAM.
ELEV: A10.1		
SECT:		

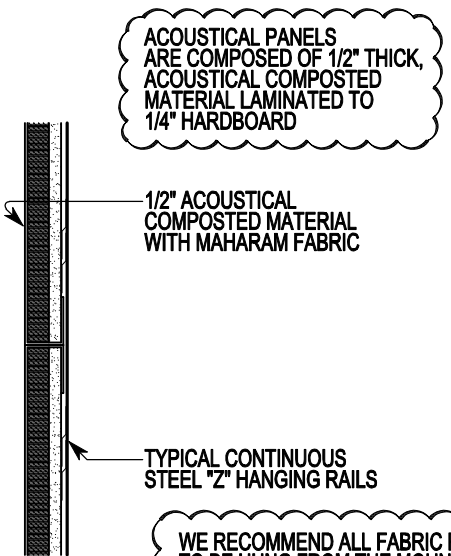


WE RECOMMEND ALL FABRIC PANELS TO BE HUNG FROM THE MOUNTING RAIL. THIS ALLOWS THE FABRIC TO FULLY WRAP THE EDGES AND ELIMINATES THE POSSIBILITY OF THE FABRIC FRAYING AT THE EDGES.

1	WOOD & ACOUSTICAL PANELS	
3" = 12"	WALL PANELS:	PLAIN SLICED CHERRY VENEER
PLAN: A3.3	ACOUSTICAL PANELS:	MAHARAM FABRIC
ELEV: A10.1		
SECT:		

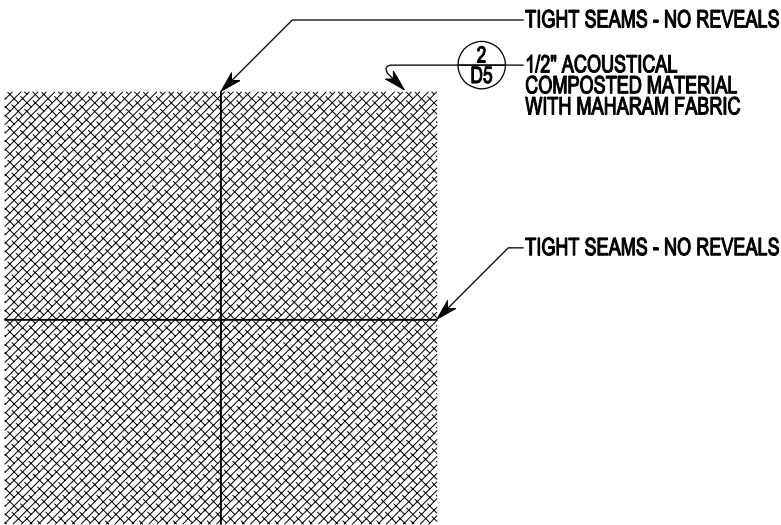


3	WOOD & ACOUSTICAL PANELS	
3" = 12"	WALL PANELS:	PLAIN SLICED CHERRY VENEER
PLAN: A3.3	WALL PANEL EDGES:	3MM SOLID CHERRY
ELEV: A10.1	ACOUSTICAL PANELS:	MAHARAM FABRIC
SECT:		

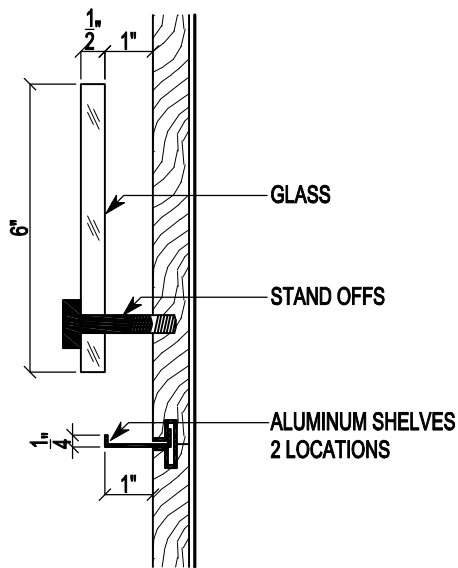


WE RECOMMEND ALL FABRIC PANELS TO BE HUNG FROM THE MOUNTING RAIL. THIS ALLOWS THE FABRIC TO FULLY WRAP THE EDGES AND ELIMINATES THE POSSIBILITY OF THE FABRIC FRAYING AT THE EDGES.

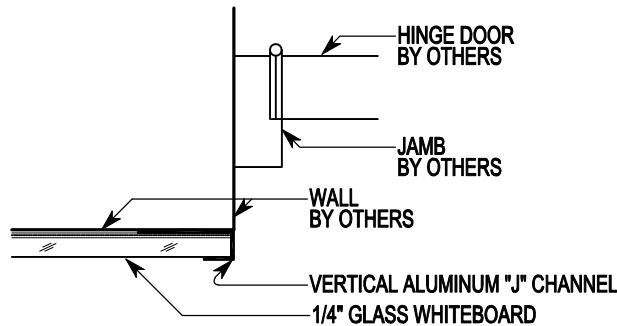
2	ACOUSTICAL PANELS	
3" = 12"	ACOUSTICAL PANELS:	MAHARAM FABRIC
PLAN: A3.3		
ELEV: A10.1		
SECT:		



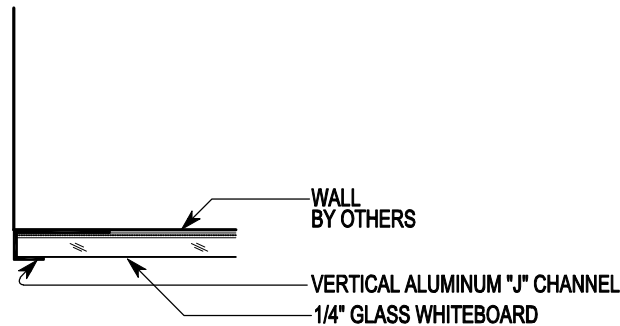
4	ACOUSTICAL PANELS	
3" = 12"	ACOUSTICAL PANELS:	MAHARAM FABRIC
PLAN: A3.3		
ELEV: A10.1		
SECT:		



3	GLASS & ALUMINUM SHELVES	
	WALL PANELS:	PLAIN SLICED CHERRY VENEER
	3" = 12"	
	PLAN:	
	ELEV:	
SECT:		



1	MARKER PANELS	
	WALL PANELS:	PLAIN SLICED CHERRY VENEER
	MARKER BOARD:	1/4" GLASS / WHITE PLAM.
	3" = 12"	
	PLAN:	A3.3
ELEV:		
SECT:		



2	MARKER PANELS	
	WALL PANELS:	PLAIN SLICED CHERRY VENEER
	MARKER BOARD:	1/4" GLASS / WHITE PLAM.
	3" = 12"	
	PLAN:	A3.3
ELEV:		
SECT:		